

**Quadrex bietet die größte Auswahl an Säulendimensionen, insbesondere Säulen mit sehr dicken Filmen.**

**Applikationen und weitere Informationen zu den einzelnen Phasen finden Sie im Internet unter:**

[www.quadrexcorp.com](http://www.quadrexcorp.com)

## Quadrex 007-1

**100% Dimethylpolysiloxan**  
unpolar, chemisch gebunden

**Temperaturbereich:**

Film 0.10-1.00µm : -50°C bis 350°C  
 Film 2.00-5.00µm : -50°C bis 300°C  
 Film 6.00-8.00µm : -50°C bis 280°C  
 Film 10.0-18.0µm : -50°C bis 240°C



**Ähnliche Phasen:** DB-1, HP-1, Rtx-1, Ultra-1, SPB-1, AT-1, BP-1, CP-Sil 5B, DB-PETRO, DB-2887, Rtx-PONA, HP-PONA, Petrocol-DH, Petrocol-227, CP-SimDist-CB, AT-Petro.

**USP-Phasen Spezifikation:** G1, G2

ID/mm	FD/µm	L/m	Artikel-Nummer	EUR
0.05	0.4	10	007-1-10FM-0.4F	810.00
0.05	0.5	15	007-1-15FM-0.5F	335.00
0.1	0.03	10	007-1-10NB-0.03F	360.00
0.1	0.05	10	007-1-10NB-0.05F	360.00
0.1	0.1	5	007-1-5NB-0.1F	340.00
0.1	0.1	10	007-1-10NB-0.1F	360.00
0.1	0.1	15	007-1-15NB-0.1F	375.00
0.1	0.1	20	007-1-20NB-0.1F	545.00
0.1	0.1	25	007-1-25NB-0.1F	575.00
0.1	0.1	30	007-1-30NB-0.1F	620.00
0.1	0.2	10	007-1-10NB-0.2F	360.00
0.1	0.2	40	007-1-40NB-0.2F	875.00
0.1	0.25	10	007-1-10NB-0.25F	360.00
0.1	0.25	15	007-1-15NB-0.25F	375.00
0.1	0.25	20	007-1-20NB-0.25F	545.00
0.1	0.25	25	007-1-25NB-0.25F	575.00
0.1	0.25	40	007-1-40NB-0.25F	875.00
0.1	0.25	50	007-1-50NB-0.25F	910.00
0.1	0.33	20	007-1-20NB-0.33F	545.00
0.1	0.4	10	007-1-10NB-0.4F	360.00
0.1	0.5	2.5	007-1-2.5NB-0.5F	145.00
0.1	0.5	10	007-1-10NB-0.5F	360.00
0.1	0.5	15	007-1-15NB-0.5F	375.00
0.1	0.5	20	007-1-20NB-0.5F	545.00
0.1	0.5	30	007-1-30NB-0.5F	620.00
0.1	0.5	50	007-1-50NB-0.5F	910.00
0.1	0.75	10	007-1-10NB-0.75F	810.00
0.1	1	5	007-1-5NB-1.0F	420.00
0.1	1	10	007-1-10NB-1.0F	855.00
0.1	1	15	007-1-15NB-1.0F	905.00
0.1	1	20	007-1-20NB-1.0F	1075.00
0.1	1.5	10	007-1-10NB-1.5F	900.00
0.1	2	15	007-1-15NB-2.0F	960.00
0.1	2	20	007-1-20NB-2.0F	1140.00
0.1	2.5	15	007-1-15NB-2.5F	990.00
0.1	3	15	007-1-15NB-3.0F	990.00
0.1	3	20	007-1-20NB-3.0F	1200.00
0.1	3.5	2	007-1-2NB-3.5F	365.00
0.1	3.5	3	007-1-3NB-3.5F	420.00
0.1	3.5	4	007-1-4NB-3.5F	420.00
0.1	3.5	5	007-1-5NB-3.5F	440.00
0.1	3.5	6	007-1-6NB-3.5F	650.00
0.1	3.5	10	007-1-10NB-3.5F	945.00
0.1	3.5	20	007-1-20NB-3.5F	1200.00
0.1	4	10	007-1-10NB-4.0F	945.00

ID/mm	FD/µm	L/m	Artikel-Nummer	EUR
0.1	4	20	007-1-20NB-4.0F	1200.00
0.18	0.1	15	007-1-15HS-0.1F	360.00
0.18	0.1	20	007-1-20HS-0.1F	500.00
0.18	0.1	30	007-1-30HS-0.1F	590.00
0.18	0.1	40	007-1-40HS-0.1F	875.00
0.18	0.1	50	007-1-50HS-0.1F	910.00
0.18	0.1	50	007-1-50MS-0.1F	910.00
0.18	0.2	20	007-1-20HS-0.2F	500.00
0.18	0.2	25	007-1-25HS-0.2F	545.00
0.18	0.25	10	007-1-10HS-0.25F	335.00
0.18	0.25	12	007-1-12NB-0.25F	350.00
0.18	0.25	15	007-1-15HS-0.25F	360.00
0.18	0.25	20	007-1-20HS-0.25F	500.00
0.18	0.25	25	007-1-25HS-0.25F	545.00
0.18	0.25	30	007-1-30HS-0.25F	590.00
0.18	0.25	50	007-1-50HS-0.25F	910.00
0.18	0.3	20	007-1-20HS-0.3F	500.00
0.18	0.33	10	007-1-10HS-0.33F	335.00
0.18	0.33	25	007-1-25HS-0.33F	545.00
0.18	0.33	50	007-1-50HS-0.33F	910.00
0.18	0.4	10	007-1-10HS-0.4F	335.00
0.18	0.4	50	007-1-50HS-0.4F	910.00
0.18	0.5	5	007-1-5HS-0.5F	260.00
0.18	0.5	10	007-1-10HS-0.5F	335.00
0.18	0.5	15	007-1-15HS-0.5F	360.00
0.18	0.5	20	007-1-20HS-0.5F	500.00
0.18	0.5	25	007-1-25HS-0.5F	545.00
0.18	0.5	30	007-1-30HS-0.5F	590.00
0.18	0.5	50	007-1-50HS-0.5F	910.00
0.18	0.6	50	007-1-50HS-0.6F	910.00
0.18	1	10	007-1-10HS-1.0F	335.00
0.18	1	15	007-1-15HS-1.0F	695.00
0.18	1	20	007-1-20HS-1.0F	990.00
0.18	1	30	007-1-30HS-1.0F	960.00
0.18	1.5	25	007-1-25HS-1.5F	1050.00
0.18	2	10	007-1-10HS-2.0F	875.00
0.18	2	20	007-1-20HS-2.0F	1035.00
0.18	3	30	007-1-30HS-3.0F	1105.00
0.18	4	20	007-1-20HS-4.0F	1085.00
0.18	5	15	007-1-15HS-5.0F	1025.00
0.18	5	20	007-1-20HS-5.0F	1085.00
0.18	5	25	007-1-25HS-5.0F	1140.00
0.18	5	30	007-1-30HS-5.0F	1200.00
0.18	6	10	007-1-10HS-6.0F	915.00
0.18	6	15	007-1-15HS-6.0F	1025.00
0.18	6	17	007-1-17HS-6.0F	1005.00
0.18	6	20	007-1-20HS-6.0F	1125.00
0.18	6	25	007-1-25HS-6.0F	1140.00
0.18	6	30	007-1-30HS-6.0F	1200.00
0.2	0.25	25	007-1-25P-0.25F	545.00
0.25	0.01	25	007-1-25-0.01F	535.00
0.25	0.01	30	007-1-30-0.01F	455.00
0.25	0.025	7.5	007-1-7.5-0.025F	350.00
0.25	0.025	10	007-1-10-0.025F	345.00
0.25	0.025	15	007-1-15-0.025F	350.00
0.25	0.025	20	007-1-20-0.025F	515.00
0.25	0.025	25	007-1-25-0.025F	535.00
0.25	0.05	15	007-1-15-0.05F	350.00
0.25	0.05	25	007-1-25-0.05F	535.00
0.25	0.05	50	007-1-50-0.05F	910.00
0.25	0.1	10	007-1-10-0.1F	345.00
0.25	0.1	15	007-1-15-0.1F	350.00
0.25	0.1	25	007-1-25-0.1F	535.00
0.25	0.1	30	007-1-30-0.1F	455.00
0.25	0.1	50	007-1-50-0.1F	910.00
0.25	0.1	60	007-1-60-0.1F	775.00
0.25	0.1	100	007-1-100-0.1F	1145.00
0.25	0.12	25	007-1-25-0.12F	535.00
0.25	0.15	25	007-1-25-0.15F	535.00
0.25	0.15	50	007-1-50-0.15F	910.00
0.25	0.2	15	007-1-15-0.2F	350.00
0.25	0.2	25	007-1-25-0.2F	535.00
0.25	0.2	30	007-1-30-0.2F	455.00
0.25	0.2	50	007-1-50-0.2F	910.00
0.25	0.2	100	007-1-100-0.2F	1145.00

Sie erhalten auch Säulen von Agilent, CS, GS-Tek, MN, Ohio Valley, Quadrex, RESTEK, SGE, Varian

ID/mm	FD/ $\mu$ m	L/m	Artikel-Nummer	EUR
0.25	0.25	2	007-1-2-0.25F	145.00
0.25	0.25	10	007-1-10-0.25F	345.00
0.25	0.25	12	007-1-12-0.25F	350.00
0.25	0.25	15	007-1-15-0.25F	350.00
0.25	0.25	25	007-1-25-0.25F	535.00
0.25	0.25	30	007-1-30-0.25F	455.00
0.25	0.25	50	007-1-50-0.25F	910.00
0.25	0.25	60	007-1-60-0.25F	775.00
0.25	0.25	75	007-1-75-0.25F	1035.00
0.25	0.25	100	007-1-100-0.25F	1145.00
0.25	0.3	10	007-1-10-0.3F	345.00
0.25	0.3	50	007-1-50-0.3F	910.00
0.25	0.33	15	007-1-15-0.33F	350.00
0.25	0.33	30	007-1-30-0.33F	455.00
0.25	0.4	25	007-1-25-0.4F	535.00
0.25	0.4	50	007-1-50-0.4F	910.00
0.25	0.5	10	007-1-10-0.5F	345.00
0.25	0.5	15	007-1-15-0.5F	350.00
0.25	0.5	25	007-1-25-0.5F	535.00
0.25	0.5	30	007-1-30-0.5F	455.00
0.25	0.5	40	007-1-40-0.5F	910.00
0.25	0.5	50	007-1-50-0.5F	910.00
0.25	0.5	60	007-1-60-0.5F	775.00
0.25	0.5	75	007-1-75-0.5F	1035.00
0.25	0.5	100	007-1-100-0.5F	1145.00
0.25	0.5	105	007-1-105-0.5F	1165.00
0.25	0.5	150	007-1-150-0.5F	1630.00
0.25	0.6	50	007-1-50-0.6F	910.00
0.25	1	10	007-1-10-1.0F	345.00
0.25	1	15	007-1-15-1.0F	350.00
0.25	1	25	007-1-25-1.0F	535.00
0.25	1	30	007-1-30-1.0F	455.00
0.25	1	50	007-1-50-1.0F	910.00
0.25	1	60	007-1-60-1.0F	775.00
0.25	1	75	007-1-75-1.0F	1035.00
0.25	1	100	007-1-100-1.0F	1145.00
0.25	1	150	007-1-150-1.0F	1680.00
0.25	1.2	10	007-1-10-1.2F	345.00
0.25	1.4	30	007-1-30-1.4F	455.00
0.25	2	15	007-1-15-2.0F	535.00
0.25	2	30	007-1-30-2.0F	920.00
0.25	2	50	007-1-50-2.0F	1220.00
0.25	3	10	007-1-10-3.0F	540.00
0.25	3	25	007-1-25-3.0F	855.00
0.25	3	30	007-1-30-3.0F	970.00
0.25	3	50	007-1-50-3.0F	1290.00
0.25	3	60	007-1-60-3.0F	890.00
0.25	5	5	007-1-5-5.0F	290.00
0.25	5	10	007-1-10-5.0F	575.00
0.25	5	15	007-1-15-5.0F	580.00
0.25	5	25	007-1-25-5.0F	955.00
0.25	5	30	007-1-30-5.0F	1030.00
0.25	8	10	007-1-10-8.0F	575.00
0.25	8	15	007-1-15-8.0F	605.00
0.25	8	25	007-1-25-8.0F	955.00
0.25	8	30	007-1-30-8.0F	1030.00
0.32	0.025	60	007-1-60W-0.025F	1020.00
0.32	0.1	10	007-1-10W-0.1F	350.00
0.32	0.1	15	007-1-15W-0.1F	365.00
0.32	0.1	25	007-1-25W-0.1F	545.00
0.32	0.1	30	007-1-30W-0.1F	620.00
0.32	0.1	50	007-1-50W-0.1F	990.00
0.32	0.1	100	007-1-100W-0.1F	1355.00
0.32	0.15	25	007-1-25W-0.15F	545.00
0.32	0.15	50	007-1-50W-0.15F	990.00
0.32	0.17	25	007-1-25W-0.17F	545.00
0.32	0.2	25	007-1-25W-0.2F	545.00
0.32	0.25	10	007-1-10W-0.25F	350.00
0.32	0.25	12	007-1-12W-0.25F	365.00
0.32	0.25	15	007-1-15W-0.25F	365.00
0.32	0.25	25	007-1-25W-0.25F	545.00
0.32	0.25	30	007-1-30W-0.25F	620.00
0.32	0.25	50	007-1-50W-0.25F	990.00
0.32	0.25	60	007-1-60W-0.25F	1020.00
0.32	0.25	100	007-1-100W-0.25F	1355.00

ID/mm	FD/ $\mu$ m	L/m	Artikel-Nummer	EUR
0.32	0.3	10	007-1-10W-0.3F	350.00
0.32	0.3	50	007-1-50W-0.3F	990.00
0.32	0.4	50	007-1-50W-0.4F	990.00
0.32	0.5	10	007-1-10W-0.5F	350.00
0.32	0.5	15	007-1-15W-0.5F	365.00
0.32	0.5	25	007-1-25W-0.5F	545.00
0.32	0.5	30	007-1-30W-0.5F	620.00
0.32	0.5	50	007-1-50W-0.5F	990.00
0.32	0.5	60	007-1-60W-0.5F	1020.00
0.32	0.5	100	007-1-100W-0.5F	1355.00
0.32	0.52	25	007-1-25W-0.52F	545.00
0.32	0.52	50	007-1-50W-0.52F	990.00
0.32	0.8	60	007-1-60W-0.8F	1020.00
0.32	1	4	007-1-4W-1.0F	285.00
0.32	1	5	007-1-5W-1.0F	310.00
0.32	1	10	007-1-10W-1.0F	350.00
0.32	1	15	007-1-15W-1.0F	365.00
0.32	1	25	007-1-25W-1.0F	545.00
0.32	1	30	007-1-30W-1.0F	620.00
0.32	1	35	007-1-35W-1.0F	660.00
0.32	1	50	007-1-50W-1.0F	990.00
0.32	1	60	007-1-60W-1.0F	1020.00
0.32	1	75	007-1-75W-1.0F	1270.00
0.32	1	100	007-1-100W-1.0F	1355.00
0.32	1.2	50	007-1-50W-1.2F	990.00
0.32	1.5	25	007-1-25W-1.5F	545.00
0.32	1.5	60	007-1-60W-1.5F	1020.00
0.32	1.5	105	007-1-105W-1.5F	1390.00
0.32	1.7	25	007-1-25W-1.7F	545.00
0.32	2	10	007-1-10W-2.0F	350.00
0.32	2	15	007-1-15W-2.0F	365.00
0.32	2	25	007-1-25W-2.0F	545.00
0.32	2	30	007-1-30W-2.0F	620.00
0.32	2	50	007-1-50W-2.0F	990.00
0.32	2	60	007-1-60W-2.0F	1020.00
0.32	2	100	007-1-100W-2.0F	1355.00
0.32	2.5	10	007-1-10W-2.5F	350.00
0.32	2.5	25	007-1-25W-2.5F	545.00
0.32	2.5	50	007-1-50W-2.5F	990.00
0.32	2.65	30	007-1-30W-2.65F	620.00
0.32	3	10	007-1-10W-3.0F	350.00
0.32	3	15	007-1-15W-3.0F	365.00
0.32	3	25	007-1-25W-3.0F	545.00
0.32	3	30	007-1-30W-3.0F	620.00
0.32	3	50	007-1-50W-3.0F	990.00
0.32	3	60	007-1-60W-3.0F	1020.00
0.32	4	10	007-1-10W-4.0F	350.00
0.32	4	15	007-1-15W-4.0F	365.00
0.32	4	25	007-1-25W-4.0F	545.00
0.32	4	30	007-1-30W-4.0F	620.00
0.32	4	50	007-1-50W-4.0F	990.00
0.32	5	5	007-1-5W-5.0F	310.00
0.32	5	10	007-1-10W-5.0F	350.00
0.32	5	15	007-1-15W-5.0F	365.00
0.32	5	25	007-1-25W-5.0F	545.00
0.32	5	30	007-1-30W-5.0F	620.00
0.32	5	50	007-1-50W-5.0F	990.00
0.32	5	60	007-1-60W-5.0F	1020.00
0.32	6	15	007-1-15W-6.0F	620.00
0.32	6	25	007-1-25W-6.0F	875.00
0.32	6	50	007-1-50W-6.0F	1155.00
0.32	7	25	007-1-25W-7.0F	900.00
0.32	7	60	007-1-60W-7.0F	1225.00
0.32	8	15	007-1-15W-8.0F	620.00
0.32	8	25	007-1-25W-8.0F	900.00
0.32	8	30	007-1-30W-8.0F	1085.00
0.32	10	10	007-1-10W-10.0F	705.00
0.32	10	10	007-1-15W-10.0F	770.00
0.32	10	25	007-1-25W-10.0F	1110.00
0.32	10	30	007-1-30W-10.0F	1340.00
0.32	12	10	007-1-10W-12.0F	705.00
0.32	12	15	007-1-15W-12.0F	770.00
0.32	12	25	007-1-25W-12.0F	1110.00
0.32	12	30	007-1-30W-12.0F	1340.00
0.32	14	25	007-1-25W-14.0F	1110.00

Applikationen: [www.quadrexcorp.com](http://www.quadrexcorp.com)

Preisinfo online: [www.c-h-m.de](http://www.c-h-m.de) unter Quadrex

ID/mm	FD/μm	L/m	Artikel-Nummer	EUR
0.32	16	15	007-1-15W-16.0F	770.00
0.53	0.1	2	007-1-2V-0.1F	285.00
0.53	0.1	5	007-1-5V-0.1F	330.00
0.53	0.1	10	007-1-10V-0.1F	365.00
0.53	0.1	15	007-1-15V-0.1F	385.00
0.53	0.1	25	007-1-25V-0.1F	650.00
0.53	0.1	30	007-1-30V-0.1F	675.00
0.53	0.1	60	007-1-60V-0.1F	1070.00
0.53	0.12	15	007-1-15V-0.12F	385.00
0.53	0.15	5	007-1-5V-0.15F	330.00
0.53	0.15	15	007-1-15V-0.15F	385.00
0.53	0.15	30	007-1-30V-0.15F	675.00
0.53	0.17	25	007-1-25V-0.17F	650.00
0.53	0.2	10	007-1-30V-0.2F	675.00
0.53	0.2	15	007-1-15V-0.2F	385.00
0.53	0.25	10	007-1-10V-0.25F	365.00
0.53	0.25	15	007-1-15V-0.25F	385.00
0.53	0.25	25	007-1-25V-0.25F	650.00
0.53	0.25	30	007-1-30V-0.25F	675.00
0.53	0.25	50	007-1-50V-0.25F	1060.00
0.53	0.33	50	007-1-50V-0.33F	1060.00
0.53	0.5	5	007-1-5V-0.5F	330.00
0.53	0.5	10	007-1-10V-0.5F	365.00
0.53	0.5	15	007-1-15V-0.5F	385.00
0.53	0.5	25	007-1-25V-0.5F	650.00
0.53	0.5	30	007-1-30V-0.5F	675.00
0.53	0.5	50	007-1-50V-0.5F	1060.00
0.53	0.5	60	007-1-60V-0.5F	1070.00
0.53	0.5	100	007-1-100V-0.5F	1460.00
0.53	0.8	60	007-1-60V-0.8F	1070.00
0.53	0.85	25	007-1-25V-0.85F	650.00
0.53	0.88	10	007-1-10V-0.88F	365.00
0.53	0.88	25	007-1-25V-0.88F	650.00
0.53	0.88	30	007-1-30V-0.88F	675.00
0.53	1	10	007-1-10V-1.0F	365.00
0.53	1	12	007-1-12V-1.0F	385.00
0.53	1	15	007-1-15V-1.0F	385.00
0.53	1	25	007-1-25V-1.0F	650.00
0.53	1	30	007-1-30V-1.0F	675.00
0.53	1	40	007-1-40V-1.0F	1060.00
0.53	1	50	007-1-50V-1.0F	1060.00
0.53	1	60	007-1-60V-1.0F	1070.00
0.53	1	75	007-1-75V-1.0F	1335.00
0.53	1.2	10	007-1-10V-1.2F	365.00
0.53	1.2	15	007-1-15V-1.2F	385.00
0.53	1.2	30	007-1-30V-1.2F	675.00
0.53	1.4	30	007-1-30V-1.4F	675.00
0.53	1.5	15	007-1-15V-1.5F	385.00
0.53	1.5	25	007-1-25V-1.5F	650.00
0.53	1.5	30	007-1-30V-1.5F	675.00
0.53	1.5	50	007-1-50V-1.5F	1060.00
0.53	1.5	60	007-1-60V-1.5F	1070.00
0.53	2	10	007-1-10V-2.0F	365.00
0.53	2	15	007-1-15V-2.0F	385.00
0.53	2	25	007-1-25V-2.0F	650.00
0.53	2	30	007-1-30V-2.0F	675.00
0.53	2	50	007-1-50V-2.0F	1060.00
0.53	2	60	007-1-60V-2.0F	1070.00
0.53	2	100	007-1-100V-2.0F	1460.00
0.53	2.5	25	007-1-25V-2.5F	650.00
0.53	2.5	50	007-1-50V-2.5F	1060.00
0.53	2.6	30	007-1-30V-2.6F	675.00
0.53	2.65	5	007-1-5V-2.65F	330.00
0.53	2.65	10	007-1-10V-2.65F	365.00
0.53	2.65	30	007-1-30V-2.65F	675.00
0.53	3	5	007-1-5V-3.0F	330.00
0.53	3	10	007-1-10V-3.0F	365.00
0.53	3	15	007-1-15V-3.0F	385.00
0.53	3	20	007-1-20V-3.0F	685.00
0.53	3	25	007-1-25V-3.0F	650.00
0.53	3	30	007-1-30V-3.0F	675.00
0.53	3	50	007-1-50V-3.0F	1060.00
0.53	3	60	007-1-60V-3.0F	1070.00
0.53	3	75	007-1-75V-3.0F	1335.00
0.53	4	10	007-1-10V-4.0F	365.00

ID/mm	FD/μm	L/m	Artikel-Nummer	EUR
0.53	4	15	007-1-15V-4.0F	385.00
0.53	4	25	007-1-25V-4.0F	650.00
0.53	4	30	007-1-30V-4.0F	675.00
0.53	4	50	007-1-50V-4.0F	1060.00
0.53	5	4	007-1-4V-5.0F	330.00
0.53	5	5	007-1-5V-5.0F	330.00
0.53	5	10	007-1-10V-5.0F	365.00
0.53	5	12	007-1-12V-5.0F	385.00
0.53	5	15	007-1-15V-5.0F	385.00
0.53	5	25	007-1-25V-5.0F	650.00
0.53	5	30	007-1-30V-5.0F	675.00
0.53	5	50	007-1-50V-5.0F	1060.00
0.53	5	60	007-1-60V-5.0F	1070.00
0.53	5	75	007-1-75V-5.0F	1335.00
0.53	5	100	007-1-100V-5.0F	1525.00
0.53	5	105	007-1-105V-5.0F	1560.00
0.53	6	10	007-1-10V-6.0F	400.00
0.53	6	15	007-1-15V-6.0F	480.00
0.53	6	25	007-1-25V-6.0F	745.00
0.53	6	30	007-1-30V-6.0F	770.00
0.53	6	50	007-1-50V-6.0F	1285.00
0.53	7	15	007-1-15V-7.0F	480.00
0.53	7	25	007-1-25V-7.0F	745.00
0.53	7	30	007-1-30V-7.0F	770.00
0.53	7	50	007-1-50V-7.0F	1285.00
0.53	7	130	007-1-130V-7.0F	2690.00
0.53	8	10	007-1-10V-8.0F	400.00
0.53	8	15	007-1-15V-8.0F	480.00
0.53	8	25	007-1-25V-8.0F	745.00
0.53	8	30	007-1-30V-8.0F	770.00
0.53	8	50	007-1-50V-8.0F	1285.00
0.53	8	60	007-1-60V-8.0F	1530.00
0.53	8	60	007-1-60V-8.0F	1285.00
0.53	8	75	007-1-75V-8.0F	1495.00
0.53	8	100	007-1-100V-8.0F	2130.00
0.53	8	150	007-1-150V-8.0F	3100.00
0.53	10	10	007-1-10V-10.0F	835.00
0.53	10	15	007-1-15V-10.0F	905.00
0.53	10	25	007-1-25V-10.0F	1220.00
0.53	10	30	007-1-30V-10.0F	1360.00
0.53	12	25	007-1-25V-12.0F	1280.00
0.53	15	10	007-1-10V-15.0F	915.00
0.53	15	15	007-1-15V-15.0F	970.00
0.53	15	25	007-1-25V-15.0F	1315.00
0.53	15	30	007-1-30V-15.0F	1480.00
0.53	18	10	007-1-10V-18.0F	915.00
0.53	18	15	007-1-15V-18.0F	970.00
0.53	18	25	007-1-25V-18.0F	1315.00
0.53	18	30	007-1-30V-18.0F	1480.00

## Quadrex 007-1ms

wie 007-1 für GC/MS  
unpolar, chemisch gebunden

Temperaturbereich:  
Film 0.10-1.00μm : -50°C bis 350°C

Ähnliche Phasen: DB-1ms, HP-1ms



ID/mm	FD/μm	L/m	Artikel-Nummer	EUR
0.18	0.18	20	007-1MS-20HS-.18F	540.00
0.18	0.33	12	007-1MS-12HS-0.33	500.00
0.25	0.25	15	007-1MS-15-0.25F	370.00
0.25	0.25	30	007-1MS-30-0.25F	605.00
0.25	0.25	30	007-1MS-30-1.0F	605.00
0.25	0.25	60	007-1MS-60-0.25F	1085.00
0.25	0.5	15	007-1MS-15-0.5F	370.00
0.25	0.5	30	007-1MS-30-0.5F	605.00
0.25	1	15	007-1MS-15-1.0F	370.00
0.32	0.25	30	007-1MS-30W-0.25F	655.00
0.32	0.5	30	007-1MS-30W-0.5F	655.00
0.32	0.8	60	007-1MS-60W-0.8F	1145.00
0.32	1	30	007-1MS-30W-1.0F	655.00
0.32	1	60	007-1MS-60W-1.0F	1145.00

Sie erhalten auch Säulen von Agilent, CS, GS-Tek, MN, Ohio Valley, Quadrex, RESTEK, SGE, Varian

## Quadrex 007-5

**5% Phenylmethylpolysiloxan**  
unpolar, chemisch gebunden

### Temperaturbereich:

Film 0.10-1.00µm : -50°C bis 350°C  
Film 2.00-5.00µm : -50°C bis 300°C  
Film 6.00-8.00µm : -50°C bis 280°C  
Film 9.0-12.00µm : -50°C bis 240°C  
Film 13.0-18.0µm : -50°C bis 200°C

**Ähnliche Phasen:** DB-5, HP-5, Rtx-5, Ultra-5, SPB-5, AT-5, BP-5, CP-Sil 8B, vergleichbar mit SE-52, SE-54, OV-73

### USP Phasen Spezifikation: G27

ID/mm	FD/µm	L/m	Artikel-Nummer	EUR
0.1	0.1	5	007-5-5NB-0.1F	340.00
0.1	0.1	10	007-5-10NB-0.1F	360.00
0.1	0.1	15	007-5-15NB-0.1F	375.00
0.1	0.1	30	007-5-30NB-0.1F	620.00
0.1	0.17	10	007-5-10NB-0.17F	360.00
0.1	0.25	4	007-5-4NB-0.25F	340.00
0.1	0.25	10	007-5-10NB-0.25F	360.00
0.1	0.25	15	007-5-15NB-0.25F	375.00
0.1	0.25	20	007-5-20NB-0.25F	545.00
0.1	0.25	30	007-5-30NB-0.25F	620.00
0.1	0.4	15	007-5-15NB-0.4F	375.00
0.1	0.4	20	007-5-20NB-0.4F	545.00
0.1	0.5	4	007-5-4NB-0.5F	340.00
0.1	0.5	10	007-5-10NB-0.5F	360.00
0.1	0.5	12	007-5-12NB-0.5F	375.00
0.1	0.5	15	007-5-15NB-0.5F	375.00
0.1	0.5	16	007-5-16NB-0.5F	375.00
0.1	0.5	30	007-5-30NB-0.5F	620.00
0.1	1	10	007-5-10NB-1.0F	830.00
0.1	1	20	007-5-20NB-1.0F	1050.00
0.1	2	15	007-5-15NB-2.0F	990.00
0.1	2.5	15	007-5-15NB-2.5F	990.00
0.1	3	10	007-5-10NB-3.0F	915.00
0.1	3	15	007-5-15NB-3.0F	990.00
0.1	3	20	007-5-20NB-3.0F	1200.00
0.1	3.5	4	007-5-4NB-3.5F	420.00
0.1	3.5	10	007-5-10NB-3.5F	945.00
0.1	3.5	20	007-5-20NB-3.5F	1200.00
0.1	4	10	007-5-10NB-4.0F	945.00
0.1	5	4	007-5-4NB-5.0F	420.00
0.1	5	20	007-5-20NB-5.0F	1200.00
0.18	0.1	10	007-5-10HS-0.1F	335.00
0.18	0.1	15	007-5-15HS-0.1F	360.00
0.18	0.1	30	007-5-30HS-0.1F	590.00
0.18	0.18	20	007-5-20HS-0.18F	500.00
0.18	0.18	30	007-5-30HS-0.18F	590.00
0.18	0.25	10	007-5-10HS-0.25F	335.00
0.18	0.25	15	007-5-15HS-0.25F	360.00
0.18	0.25	30	007-5-30HS-0.25F	590.00
0.18	0.25	40	007-5-40HS-0.25F	875.00
0.18	0.5	10	007-5-10HS-0.5F	335.00
0.18	0.5	15	007-5-15HS-0.5F	360.00
0.18	1	15	007-5-15HS-1.0F	800.00
0.18	3	15	007-5-15HS-3.0F	840.00
0.18	5	30	007-5-30HS-5.0F	1200.00
0.18	6	20	007-5-20HS-6.0F	1125.00
0.18	6	30	007-5-30HS-6.0F	1200.00
0.25	0.01	30	007-5-30-0.01F	455.00
0.25	0.05	15	007-5-15-0.05F	350.00
0.25	0.1	5	007-5-5-0.1F	325.00
0.25	0.1	10	007-5-10-0.1F	345.00
0.25	0.1	15	007-5-15-0.1F	350.00
0.25	0.1	30	007-5-30-0.1F	455.00
0.25	0.1	60	007-5-60-0.1F	775.00
0.25	0.1	75	007-5-75-0.1F	1035.00
0.25	0.1	105	007-5-105-0.1F	1145.00
0.25	0.15	15	007-5-15-0.15F	350.00
0.25	0.15	30	007-5-30-0.15F	455.00
0.25	0.2	30	007-5-30-0.2F	455.00
0.25	0.25	5	007-5-5-0.25F	325.00
0.25	0.25	10	007-5-10-0.25F	345.00



ID/mm	FD/µm	L/m	Artikel-Nummer	EUR
0.25	0.25	15	007-5-15-0.25F	350.00
0.25	0.25	30	007-5-30-0.25F	455.00
0.25	0.25	60	007-5-60-0.25F	775.00
0.25	0.25	75	007-5-75-0.25F	1035.00
0.25	0.25	100	007-5-100-0.25F	1145.00
0.25	0.33	15	007-5-15-0.33F	350.00
0.25	0.33	30	007-5-30-0.33F	455.00
0.25	0.5	12	007-5-12-0.5F	350.00
0.25	0.5	15	007-5-15-0.5F	350.00
0.25	0.5	30	007-5-30-0.5F	455.00
0.25	0.5	60	007-5-60-0.5F	775.00
0.25	0.5	105	007-5-105-0.5F	1145.00
0.25	1	5	007-5-5-1.0F	325.00
0.25	1	10	007-5-10-1.0F	345.00
0.25	1	15	007-5-15-1.0F	350.00
0.25	1	30	007-5-30-1.0F	455.00
0.25	1	60	007-5-60-1.0F	775.00
0.25	1	75	007-5-75-1.0F	1035.00
0.25	1.4	30	007-5-30-1.4F	455.00
0.25	1.5	30	007-5-30-1.5F	455.00
0.25	1.5	60	007-5-60-1.5F	775.00
0.25	2	30	007-5-30-2.0F	945.00
0.25	3	10	007-5-10-3.0F	535.00
0.25	3	15	007-5-15-3.0F	535.00
0.25	3	30	007-5-30-3.0F	945.00
0.25	5	15	007-5-15-5.0F	580.00
0.25	5	30	007-5-30-5.0F	945.00
0.25	8	5	007-5-5-8.0F	480.00
0.25	8	10	007-5-10-8.0F	560.00
0.25	8	15	007-5-15-8.0F	605.00
0.25	8	30	007-5-30-8.0F	1015.00
0.25	8	60	007-5-60-8.0F	1425.00
0.32	0.1	10	007-5-10W-0.1F	350.00
0.32	0.1	15	007-5-15W-0.1F	365.00
0.32	0.1	30	007-5-30W-0.1F	620.00
0.32	0.15	30	007-5-30W-0.15F	1255.00
0.32	0.2	15	007-5-15W-0.2F	365.00
0.32	0.2	30	007-5-30W-0.2F	620.00
0.32	0.2	60	007-5-60W-0.2F	1020.00
0.32	0.25	10	007-5-10W-0.25F	350.00
0.32	0.25	15	007-5-15W-0.25F	365.00
0.32	0.25	30	007-5-30W-0.25F	620.00
0.32	0.25	60	007-5-60W-0.25F	1020.00
0.32	0.25	75	007-5-75W-0.25F	1270.00
0.32	0.25	100	007-5-100W-0.25F	1355.00
0.32	0.5	10	007-5-10W-0.5F	350.00
0.32	0.5	15	007-5-15W-0.5F	365.00
0.32	0.5	30	007-5-30W-0.5F	620.00
0.32	0.5	60	007-5-60W-0.5F	1020.00
0.32	0.5	100	007-5-100W-0.5F	1355.00
0.32	1	6	007-5-6W-1.0F	350.00
0.32	1	10	007-5-10W-1.0F	350.00
0.32	1	15	007-5-15W-1.0F	365.00
0.32	1	30	007-5-30W-1.0F	620.00
0.32	1	60	007-5-60W-1.0F	1020.00
0.32	1	75	007-5-75W-1.0F	1270.00
0.32	1	100	007-5-100W-1.0F	1355.00
0.32	1	120	007-5-120W-1.0F	1925.00
0.32	1.2	30	007-5-30W-1.2F	620.00
0.32	1.5	5	007-5-5W-1.5F	310.00
0.32	1.5	30	007-5-30W-1.5F	620.00
0.32	2	10	007-5-10W-2.0F	350.00
0.32	2	15	007-5-15W-2.0F	365.00
0.32	2	30	007-5-30W-2.0F	620.00
0.32	2	60	007-5-60W-2.0F	1020.00
0.32	2.5	30	007-5-30W-2.5F	620.00
0.32	3	10	007-5-10W-3.0F	350.00
0.32	3	15	007-5-15W-3.0F	365.00
0.32	3	30	007-5-30W-3.0F	620.00
0.32	3	60	007-5-60W-3.0F	1020.00
0.32	3	100	007-5-100W-3.0F	1355.00
0.32	4	10	007-5-10W-4.0F	350.00
0.32	4	15	007-5-15W-4.0F	365.00
0.32	5	10	007-5-10W-5.0F	350.00
0.32	5	15	007-5-15W-5.0F	365.00

Applikationen: [www.quadrexcorp.com](http://www.quadrexcorp.com)

Preisinfo online: [www.c-h-m.de](http://www.c-h-m.de) unter Quadrex

ID/mm	FD/µm	L/m	Artikel-Nummer	EUR
0.32	5	60	007-5-60W-5.0F	1020.00
0.32	5	75	007-5-75W-5.0F	1305.00
0.32	5	85	007-5-85W-5.0F	1300.00
0.32	6	30	007-5-30W-6.0F	1205.00
0.32	8	10	007-5-10W-8.0F	620.00
0.32	8	30	007-5-30W-8.0F	1205.00
0.32	8	60	007-5-60W-8.0F	1470.00
0.32	10	10	007-5-10W-10.0F	705.00
0.32	10	15	007-5-15W-10.0F	785.00
0.32	10	30	007-5-30W-10.0F	1365.00
0.32	12	10	007-5-10W-12.0F	705.00
0.32	12	30	007-5-30W-12.0F	1365.00
0.32	x 4	30	007-5-30W-4.0F	620.00
0.32	x 5	30	007-5-30W-5.0F	620.00
0.53	0.1	5	007-5-5V-0.1F	325.00
0.53	0.1	10	007-5-10V-0.1F	365.00
0.53	0.1	15	007-5-15V-0.1F	385.00
0.53	0.1	30	007-5-30V-0.1F	675.00
0.53	0.2	10	007-5-10HS-0.2F	335.00
0.53	0.25	6	007-5-6V-0.25F	305.00
0.53	0.25	10	007-5-10V-0.25F	365.00
0.53	0.25	15	007-5-15V-0.25F	385.00
0.53	0.25	30	007-5-30V-0.25F	675.00
0.53	0.25	60	007-5-60V-0.25F	1070.00
0.53	0.3	30	007-5-30V-0.3F	675.00
0.53	0.5	10	007-5-10V-0.5F	365.00
0.53	0.5	15	007-5-15V-0.5F	385.00
0.53	0.5	30	007-5-30V-0.5F	675.00
0.53	0.88	30	007-5-30V-0.88F	675.00
0.53	1	10	007-5-10V-1.0F	365.00
0.53	1	12	007-5-12V-1.0F	385.00
0.53	1	15	007-5-15V-1.0F	385.00
0.53	1	30	007-5-30V-1.0F	675.00
0.53	1	60	007-5-60V-1.0F	1070.00
0.53	1.2	10	007-5-10V-1.2F	365.00
0.53	1.5	6	007-5-6V-1.5F	345.00
0.53	1.5	15	007-5-15V-1.5F	385.00

ID/mm	FD/µm	L/m	Artikel-Nummer	EUR
0.53	1.5	30	007-5-30V-1.5F	675.00
0.53	1.5	60	007-5-60V-1.5F	1070.00
0.53	2	10	007-5-10V-2.0F	365.00
0.53	2	12	007-5-12V-2.0F	385.00
0.53	2	15	007-5-15V-2.0F	385.00
0.53	2	30	007-5-30V-2.0F	675.00
0.53	2.65	10	007-5-10V-2.65F	365.00
0.53	3	5	007-5-5V-3.0F	325.00
0.53	3	10	007-5-10V-3.0F	365.00
0.53	3	15	007-5-15V-3.0F	385.00
0.53	3	30	007-5-30V-3.0F	675.00
0.53	3	60	007-5-60V-3.0F	1070.00
0.53	4	10	007-5-10V-4.0F	365.00
0.53	4	15	007-5-15V-4.0F	385.00
0.53	4	30	007-5-30V-4.0F	675.00
0.53	5	5	007-5-5V-5.0F	325.00
0.53	5	10	007-5-10V-5.0F	365.00
0.53	5	15	007-5-15V-5.0F	385.00
0.53	5	30	007-5-30V-5.0F	675.00
0.53	5	60	007-5-60V-5.0F	1070.00
0.53	5	75	007-5-75V-5.0F	1490.00
0.53	5	100	007-5-100V-5.0F	1520.00
0.53	6	10	007-5-10V-6.0F	400.00
0.53	6	15	007-5-15V-6.0F	480.00
0.53	7	10	007-5-10V-7.0F	400.00
0.53	8	10	007-5-10V-8.0F	400.00
0.53	8	15	007-5-15V-8.0F	480.00
0.53	8	30	007-5-30V-8.0F	770.00
0.53	8	60	007-5-60V-8.0F	1440.00
0.53	8	75	007-5-75V-8.0F	1500.00
0.53	8	100	007-5-100V-8.0F	2130.00
0.53	10	15	007-5-15V-10.0F	905.00
0.53	10	30	007-5-30V-10.0F	1360.00
0.53	18	10	007-5-10V-18.0F	915.00
0.53	18	15	007-5-15V-18.0F	970.00
0.53	18	30	007-5-30V-18.0F	1480.00
0.53	x 12	30	007-5-30V-12.0F	1360.00
0.53	x 15	30	007-5-30V-15.0F	1480.00

## Quadrex 007-5ms

### SilPhenylpolysiloxan

unpolar, chem. gebunden, GC/ms

#### Temperaturbereich:

Film 0.10-1.00µm : -50°C bis 350°C

Ähnliche Phasen: DB-5ms, Rtx-5ms, Ultra-2, BPX-5, MDN-5S, CP-Sil 8CB/ms



ID/mm	FD/µm	L/m	Artikel-Nummer	EUR
0.1	0.1	10	007-5MS-10NB-0.1F	370.00
0.1	0.1	12	007-5MS-12NB-0.1F	420.00
0.1	0.25	10	007-5MS-10NB-.25F	370.00
0.1	0.25	20	007-5MS-20NB-.25F	580.00
0.1	0.5	20	007-5MS-20NB-0.5F	580.00
0.1	0.5	30	007-5MS-30NB-0.5F	800.00
0.1	1	20	007-5MS-20NB-1.0F	620.00
0.1	1	30	007-5MS-30NB-1.0F	800.00
0.18	0.1	60	007-5MS-60HS-0.1F	1085.00
0.18	0.18	20	007-5MS-20HS-.18F	575.00
0.18	0.25	10	007-5MS-10HS-.25F	370.00
0.18	0.25	15	007-5MS-15HS-.25F	405.00
0.18	0.25	25	007-5MS-25HS-.25F	620.00
0.18	0.5	10	007-5MS-10HS-0.5F	370.00
0.18	0.5	12	007-5MS-12HS-0.5F	405.00
0.18	0.5	15	007-5MS-15HS-0.5F	405.00
0.18	0.5	20	007-5MS-20HS-0.5F	575.00
0.25	0.1	15	007-5MS-15-0.1F	370.00
0.25	0.1	30	007-5MS-30-0.1F	605.00
0.25	0.1	60	007-5MS-60-0.1F	1085.00

ID/mm	FD/µm	L/m	Artikel-Nummer	EUR
0.25	0.25	15	007-5MS-15-0.25F	370.00
0.25	0.25	20	007-5MS-20-0.25F	560.00
0.25	0.25	25	007-5MS-25-0.25F	590.00
0.25	0.25	30	007-5MS-30-0.25F	605.00
0.25	0.25	60	007-5MS-60-0.25F	1085.00
0.25	0.5	10	007-5MS-10-0.5F	370.00
0.25	0.5	15	007-5MS-15-0.5F	370.00
0.25	0.5	30	007-5MS-30-0.5F	605.00
0.25	1	25	007-5MS-25-1.0F	590.00
0.25	1	30	007-5MS-30-1.0F	605.00
0.25	1	60	007-5MS-60-1.0F	1085.00
0.25	1	10	007-5MS-10S-1.0F	1495.00
0.25	1.5	30	007-5MS-30-1.5F	605.00
0.25	1.5	60	007-5MS-60-0.5F	1085.00
0.25	1.5	60	007-5MS-60-1.5F	1085.00
0.25	3	60	007-5MS-60-3.0F	1155.00
0.32	0.1	15	007-5MS-15W-0.1F	460.00
0.32	0.25	15	007-5MS-15W-0.25F	460.00
0.32	0.25	30	007-5MS-30W-0.25F	655.00
0.32	0.5	25	007-5MS-25W-0.5F	630.00
0.32	0.5	30	007-5MS-30W-0.5F	655.00
0.32	1	15	007-5MS-15W-1.0F	460.00
0.32	1	30	007-5MS-30W-1.0F	655.00
0.32	1	60	007-5MS-60W-1.0F	1145.00
0.53	0.25	10	007-5MS-10V-0.25F	465.00
0.53	0.25	60	007-5MS-60V-0.25F	1085.00
0.53	1	12	007-5MS-12V-1.0F	385.00
0.53	1	30	007-5MS-30V-1.0F	770.00
0.53	1.5	60	007-5MS-60V-1.5F	1230.00
0.53	3	30	007-5MS-30V-3.0F	795.00

Sie erhalten auch Säulen von Agilent, CS, GS-Tek, MN, Ohio Valley, Quadrex, RESTEK, SGE, Varian

## Quadrex 007-10, 007-20

**10% Phenylmethylpolysiloxan**  
**20% Phenylmethylpolysiloxan**  
 leicht polar, Polarität zwischen  
 007-5 und 007-35

### Temperaturbereich:

Film 0.10-1.00µm : -50bis 350°C  
 Film 2.00-5.00µm : -50bis 280°C  
 Film 6.00-8.00µm : -50bis 260°C

**Ähnliche Phasen:** Rtx-20, SPB-20, At-20 vergleichbar OV-3, OV-7.

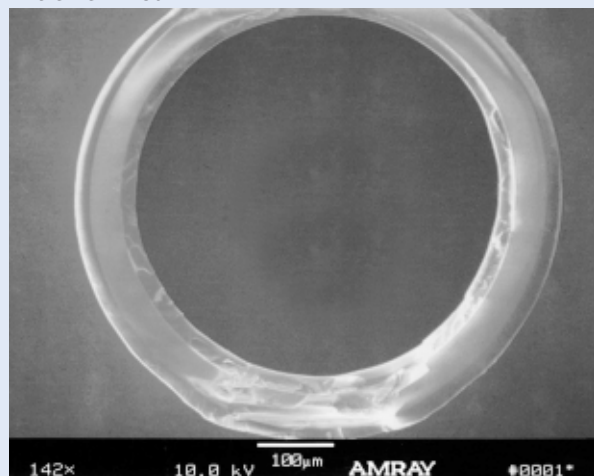
**USP Phasenspezifikation:** G32



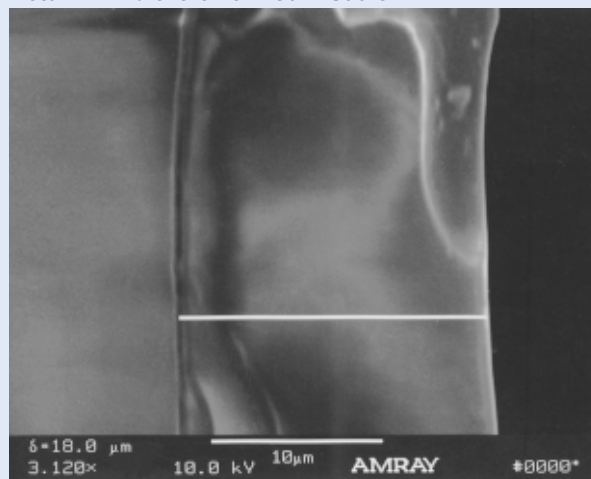
ID/mm	FD/µm	L/m	Artikel-Nummer	EUR
0.1	0.1	15	007-10-15NB-0.1F	375.00
0.1	0.5	15	007-10-15NB-0.5F	375.00
0.25	0.1	25	007-10-25-0.1F	535.00
0.25	0.25	15	007-10-15-0.25F	350.00
0.25	0.25	25	007-10-25-0.25F	535.00
0.25	0.25	30	007-10-30-0.25F	455.00
0.25	0.25	50	007-10-50-0.25F	910.00
0.25	0.4	25	007-10-25-0.4F	535.00
0.25	0.5	25	007-10-25-0.5F	535.00
0.32	0.1	25	007-10-25W-0.1F	545.00
0.32	0.25	15	007-10-15W-0.25F	365.00
0.32	0.25	25	007-10-25W-0.25F	545.00
0.32	0.25	30	007-10-30W-0.25F	620.00
0.32	0.25	50	007-10-50W-0.25F	990.00
0.32	0.25	60	007-10-60W-0.25F	1020.00
0.32	0.5	15	007-10-15W-0.5F	365.00
0.32	0.5	25	007-10-25W-0.5F	545.00
0.32	1	25	007-10-25W-1.0F	545.00
0.32	1	10	007-10-100W-1.0F	1355.00
0.32	4	25	007-10-25W-4.0F	545.00
0.32	5	25	007-10-25W-5.0F	545.00
0.53	0.25	25	007-10-25V-0.25F	650.00
0.53	0.5	10	007-10-10V-0.5F	365.00
0.53	0.5	15	007-10-15V-0.5F	385.00
0.53	0.5	30	007-10-30V-0.5F	675.00
0.53	3	25	007-10-25V-3.0F	650.00
0.53	3	30	007-10-30V-3.0F	675.00
0.53	5	25	007-10-25V-5.0F	650.00
0.53	5	50	007-10-50V-5.0F	1060.00
0.1	0.03	10	007-20-10NB-0.03F	360.00
0.1	0.1	15	007-20-15NB-0.1F	375.00
0.1	0.25	25	007-20-25NB-0.25F	575.00
0.1	0.5	15	007-20-15NB-0.5F	360.00
0.18	0.2	20	007-20-20HS-0.2F	500.00
0.18	0.25	20	007-20-20HS-0.25F	500.00
0.18	0.25	50	007-20-50HS-0.25F	910.00

ID/mm	FD/µm	L/m	Artikel-Nummer	EUR
0.18	0.5	15	007-20-15HS-0.5F	360.00
0.18	0.5	25	007-20-25HS-0.5F	545.00
0.25	0.01	25	007-20-25-0.01F	535.00
0.25	0.1	25	007-20-25-0.1F	535.00
0.25	0.2	30	007-20-30-0.2F	455.00
0.25	0.25	15	007-20-15-0.25F	350.00
0.25	0.25	25	007-20-25-0.25F	535.00
0.25	0.25	30	007-20-30-0.25F	455.00
0.25	0.25	50	007-20-50-0.25F	910.00
0.25	0.25	60	007-20-60-0.25F	775.00
0.25	0.5	25	007-20-25-0.5F	535.00
0.25	0.5	50	007-20-50-0.5F	910.00
0.25	0.5	60	007-20-60-0.5F	775.00
0.25	1	15	007-20-15-1.0F	350.00
0.25	1	25	007-20-25-1.0F	535.00
0.25	1	30	007-20-30-1.0F	455.00
0.25	1	50	007-20-50-1.0F	910.00
0.25	1	60	007-20-60-1.0F	775.00
0.25	2	60	007-20-60-2.0F	1035.00
0.32	0.1	15	007-20-15W-0.1F	365.00
0.32	0.1	25	007-20-25W-0.1F	545.00
0.32	0.1	50	007-20-50W-0.1F	990.00
0.32	0.25	15	007-20-15W-0.25F	365.00
0.32	0.25	25	007-20-25W-0.25F	545.00
0.32	0.25	30	007-20-30W-0.25F	620.00
0.32	0.25	50	007-20-50W-0.25F	990.00
0.32	0.5	15	007-20-15W-0.5F	365.00
0.32	0.5	25	007-20-25W-0.5F	545.00
0.32	0.5	30	007-20-30W-0.5F	620.00
0.32	0.5	60	007-20-60W-0.5F	1020.00
0.32	1	10	007-20-10W-1.0F	350.00
0.32	1	25	007-20-25W-1.0F	545.00
0.32	1	30	007-20-30W-1.0F	620.00
0.32	1	50	007-20-50W-1.0F	990.00
0.32	1	60	007-20-60W-1.0F	1020.00
0.32	1	100	007-20-100W-1.0F	1335.00
0.32	5	15	007-20-15W-5.0F	365.00
0.32	5	60	007-20-60W-5.0F	1020.00
0.53	0.5	30	007-20-30V-0.5F	675.00
0.53	1	10	007-20-10V-1.0F	365.00
0.53	1	15	007-20-15V-1.0F	385.00
0.53	1	30	007-20-30V-1.0F	675.00
0.53	1	50	007-20-50V-1.0F	1060.00
0.53	2	15	007-20-15V-2.0F	385.00
0.53	2	25	007-20-25V-2.0F	650.00
0.53	3	15	007-20-15V-3.0F	385.00
0.53	3	30	007-20-30V-3.0F	675.00
0.53	3	50	007-20-50V-3.0F	1060.00
0.53	5	10	007-20-10V-5.0F	365.00
0.53	5	30	007-20-30V-5.0F	675.00
0.53	5	100	007-20-100V-5.0F	1495.00

Das Foto zeigt eine REM Aufnahme einer 0.53mm Säule mit einem 18µm Film.



Detail: Filmdicke einer 18µm Säule.



Applikationen: [www.quadrexcorp.com](http://www.quadrexcorp.com)

Preisinfo online: [www.c-h-m.de](http://www.c-h-m.de) unter Quadrex

## 007-502, 007-608, 007-624

**Cyanopropylphenyl-Phasen**  
environmental columns (EPA)

**Temperaturbereich:**

Film 0.10-1.00µm : -50 bis 325°C  
Film 2.00-5.00µm : -50 bis 280°C

**Ähnliche Phasen:** DB-624, Rtx-502, DB-608, SPB-608, Rtx-35, VOCOL, Rtx-Volatiles, Rtx-624, AT-624, BP-624, CPSil-13CB



spezielle Säulen für EPA Methoden 502, 503, 524, 601, 602, 608, 624, 8010, 8011, 8015, 8020, 8240, 8260. EPA 624: VOC's in waste water, EPA 502: VOC's in drinking water, EPA 608: Pestizide

ID/mm	FD/µm	L/m	Artikel-Nummer	EUR
0.18	1	15	007-502-15HS-1.0F	405.00
0.18	1	40	007-502-40HS-1.0F	875.00
0.25	1.2	30	007-502-30-1.2F	630.00
0.25	1.5	60	007-502-60-1.5F	965.00
0.25	3	10	007-502-10-3.0F	500.00
0.25	3	60	007-502-60-3.0F	980.00
0.32	1.5	75	007-502-75W-1.5F	1320.00
0.32	2	10	007-502-10W-2.0F	590.00
0.32	2	30	007-502-30W-2.0F	630.00
0.32	2	60	007-502-60W-2.0F	1025.00
0.32	x3.0	105	007-502-105W-3.0F	1625.00
0.53	1	15	007-502-15V-1.0F	500.00
0.53	2	60	007-502-60V-2.0F	1085.00
0.53	2	105	007-502-105V-2.0F	1550.00
0.53	2.5	60	007-502-60V-2.5F	1085.00
0.53	2.5	75	007-502-75V-2.5F	1335.00
0.53	2.5	85	007-502-85V-2.5F	1330.00
0.53	2.5	105	007-502-105V-2.5F	1550.00
0.53	3	30	007-502-30V-3.0F	700.00
0.53	3	60	007-502-60V-3.0F	1085.00
0.53	3	75	007-502-75V-3.0F	1335.00
0.53	3	105	007-502-105V-3.0F	1550.00
0.53	6	60	007-502-60V-6.0F	1085.00
0.18	0.25	30	007-608-30HS-.25F	590.00
0.25	0.25	25	007-608-25-0.25F	580.00
0.25	0.25	30	007-608-30-0.25F	590.00
0.25	0.25	60	007-608-60-0.25F	965.00
0.25	0.4	15	007-608-15-0.4F	400.00
0.25	0.5	30	007-608-30-0.5F	590.00
0.25	1	30	007-608-30-1.0F	590.00
0.32	0.25	25	007-608-25W-0.25F	620.00
0.32	0.25	30	007-608-30W-0.25F	630.00
0.32	0.25	50	007-608-50W-0.25F	1015.00
0.32	0.5	25	007-608-25W-0.5F	620.00
0.32	0.5	30	007-608-30W-0.5F	630.00
0.32	1	30	007-608-30W-1.0F	630.00
0.32	1.8	30	007-608-30W-1.8F	630.00
0.53	0.5	10	007-608-10V-0.5F	400.00
0.53	0.5	15	007-608-15V-0.5F	505.00
0.53	0.5	30	007-608-30V-0.5F	700.00
0.53	0.8	10	007-608-10V-0.8F	400.00
0.53	0.8	15	007-608-15V-0.8F	505.00
0.53	0.8	30	007-608-30V-0.8F	700.00
0.53	1	30	007-608-30V-1.0F	700.00
0.1	0.5	10	007-624-10NB-0.5F	370.00
0.1	0.5	30	007-624-30NB-0.5F	665.00
0.1	0.5	60	007-624-60NB-0.5F	1085.00
0.18	0.33	50	007-624-50HS-0.33	945.00
0.18	0.84	25	007-624-25HS-.84F	620.00
0.18	1	10	007-624-10HS-1.0F	370.00
0.18	1	20	007-624-20HS-1.0F	610.00
0.18	1	25	007-624-25HS-1.0F	620.00
0.18	1	30	007-624-30HS-1.0F	695.00
0.18	1.12	25	007-624-25HS-1.12	620.00
0.18	1.4	20	007-624-20HS-1.4F	610.00
0.18	x1.0	60	007-624-60HS-1.0F	990.00
0.25	0.25	30	007-624-30-0.25F	590.00
0.25	1	30	007-624-30-1.0F	590.00
0.25	1	50	007-624-50-1.0F	945.00
0.25	1.12	25	007-624-25-1.12F	590.00

ID/mm	FD/µm	L/m	Artikel-Nummer	EUR
0.25	1.4	15	007-624-15-1.4F	420.00
0.25	1.4	30	007-624-30-1.4F	590.00
0.25	1.4	60	007-624-60-1.4F	965.00
0.25	1.5	30	007-624-30-1.5F	590.00
0.25	2	30	007-624-30-2.0F	590.00
0.25	2	50	007-624-50-2.0F	945.00
0.25	2	60	007-624-60-2.0F	965.00
0.25	3	30	007-624-30-3.0F	590.00
0.25	3	60	007-624-60-3.0F	965.00
0.32	0.25	30	007-624-30W-0.25F	630.00
0.32	0.5	30	007-624-30W-0.5F	630.00
0.32	1	30	007-624-30W-1.0F	630.00
0.32	1	60	007-624-60W-1.0F	1025.00
0.32	1	105	007-624-105W-1.0F	1460.00
0.32	1.4	50	007-624-50W-1.4F	1025.00
0.32	1.4	60	007-624-60W-1.4F	1025.00
0.32	1.6	60	007-624-60W-1.6F	1025.00
0.32	1.8	15	007-624-15W-1.8F	405.00
0.32	1.8	30	007-624-30W-1.8F	630.00
0.32	1.8	60	007-624-60W-1.8F	1025.00
0.32	1.8	75	007-624-75W-1.8F	1220.00
0.32	1.8	90	007-624-90W-1.8F	1345.00
0.32	1.8	105	007-624-105W-1.8F	1460.00
0.32	2	30	007-624-30W-2.0F	630.00
0.32	3	10	007-624-10W-3.0F	390.00
0.32	3	25	007-624-25W-3.0F	620.00
0.32	3	30	007-624-30W-3.0F	630.00
0.32	3	50	007-624-50W-3.0F	1015.00
0.32	3	60	007-624-60W-3.0F	1025.00
0.32	3	105	007-624-105W-3.0F	1460.00
0.32	4	50	007-624-50W-4.0F	1015.00
0.32	5	10	007-624-10W-5.0F	390.00
0.32	5	30	007-624-30W-5.0F	650.00
0.32	5	50	007-624-50W-5.0F	1040.00
0.32	5	60	007-624-60W-5.0F	1050.00
0.32	5	75	007-624-75W-5.0F	1250.00
0.32	10	30	007-624-30W-10.0F	650.00
0.53	0.25	30	007-624-30V-0.25F	700.00
0.53	0.25	50	007-624-50V-0.25F	1070.00
0.53	0.5	30	007-624-30V-0.5F	700.00
0.53	0.5	60	007-624-60V-0.5F	1085.00
0.53	0.8	30	007-624-30V-0.8F	700.00
0.53	1	30	007-624-30V-1.0F	700.00
0.53	1	50	007-624-50V-1.0F	1070.00
0.53	1.5	15	007-624-15V-1.5F	505.00
0.53	1.5	60	007-624-60V-1.5F	1085.00
0.53	1.8	30	007-624-30V-1.8F	700.00
0.53	2	10	007-624-10V-2.0F	400.00
0.53	2	30	007-624-30V-2.0F	700.00
0.53	2	50	007-624-50V-2.0F	1070.00
0.53	3	15	007-624-15V-3.0F	505.00
0.53	3	25	007-624-25V-3.0F	700.00
0.53	3	30	007-624-30V-3.0F	700.00
0.53	3	50	007-624-50V-3.0F	1070.00
0.53	3	60	007-624-60V-3.0F	1085.00
0.53	3	75	007-624-75V-3.0F	1335.00
0.53	3	100	007-624-100V-3.0F	1550.00
0.53	3	105	007-624-105V-3.0F	1550.00
0.53	4	30	007-624-30V-4.0F	700.00
0.53	4	50	007-624-50V-4.0F	1070.00
0.53	5	30	007-624-30V-5.0F	720.00
0.53	5	50	007-624-50V-5.0F	1085.00
0.53	5	60	007-624-60V-5.0F	1100.00
0.53	5	75	007-624-75V-5.0F	1390.00
0.53	8	2	007-624-2V-8.0F	285.00



Sie erhalten auch Säulen von Agilent, CS, GS-Tek, MN, Ohio Valley, Quadrex, RESTEK, SGE, Varian

## Quadrex HT-Phasen

**Dimethylpolysiloxan**  
**50% Phenylmethylpolysiloxan**  
**50% Phenylmethylpolysiloxan**  
 Hochtemperaturphasen

### Temperaturbereich:

Film 0.10µm : -50°C bis 420/440°C  
 Film 0.15-0.25µm : -50°C bis 400/420°C



ID/mm	FD/µm	L/m	Artikel-Nummer	EUR
0.1	0.25	15	007-1HT-15NB-.25F	460.00
0.25	0.1	10	007-1HT-10-0.1F	395.00
0.25	0.1	15	007-1HT-15-0.1F	395.00
0.25	0.1	25	007-1HT-25-0.1F	865.00
0.25	0.15	30	007-1HT-30-0.15F	865.00
0.32	0.1	10	007-1HT-10W-0.1F	400.00
0.32	0.1	15	007-1HT-15W-0.1F	415.00
0.32	0.1	25	007-1HT-25W-0.1F	605.00
0.32	0.15	15	007-1HT-15W-0.15F	415.00
0.32	0.25	30	007-1HT-30W-0.25F	655.00
0.53	0.1	30	007-1HT-30V-0.1F	775.00
0.53	0.15	25	007-1HT-25V-0.15F	775.00
0.1	0.1	10	007-50HT-10NB-0.1	385.00

## Quadrex 007-35

**35% Phenylmethylpolysiloxan**  
 mittel polar, chemisch gebunden

### Temperaturbereich:

Film 0.10-1.00µm : -50°C bis 300°C  
 Film 2.00-5.00µm : -50°C bis 280°C

**Ähnliche Phasen:** DB-35, HP-35, Rtx-35, SPB-35, AT-35, BPX-35

**USP Phasenspezifikation:** G42

ID/mm	FD/µm	L/m	Artikel-Nummer	EUR
0.1	0.5	10	007-35-10NB-0.5F	360.00
0.1	0.5	15	007-35-15NB-0.5F	375.00
0.1	2.5	15	007-35-15NB-0.25F	360.00
0.18	0.2	40	007-35-40HS-0.2F	875.00
0.18	0.25	20	007-35-20HS-0.25F	500.00
0.18	0.5	30	007-35-30HS-0.5F	590.00
0.25	0.1	15	007-35-15-0.1F	350.00
0.25	0.1	30	007-35-30-0.1F	455.00
0.25	0.1	50	007-35-50-0.1F	910.00
0.25	0.2	10	007-35-10-0.2F	345.00
0.25	0.2	15	007-35-15-0.2F	350.00
0.25	0.2	25	007-35-25-0.2F	535.00
0.25	0.2	30	007-35-30-0.2F	455.00
0.25	0.2	50	007-35-50-0.2F	910.00
0.25	0.25	15	007-35-15-0.25F	350.00
0.25	0.25	25	007-35-25-0.25F	535.00
0.25	0.25	30	007-35-30-0.25F	455.00
0.25	0.25	50	007-35-50-0.25F	910.00
0.25	0.25	60	007-35-60-0.25F	775.00
0.25	0.5	15	007-35-15-0.5F	350.00
0.25	0.5	25	007-35-25-0.5F	535.00
0.25	0.5	30	007-35-30-0.5F	455.00
0.25	1	15	007-35-15-1.0F	350.00
0.25	1	30	007-35-30-1.0F	455.00
0.25	1	50	007-35-50-1.0F	910.00
0.25	1	60	007-35-60-1.0F	775.00
0.32	0.25	10	007-35-10W-0.25F	350.00
0.32	0.25	15	007-35-15W-0.25F	365.00
0.32	0.25	25	007-35-25W-0.25F	545.00

Applikationen: [www.quadrexcorp.com](http://www.quadrexcorp.com)

ID/mm	FD/µm	L/m	Artikel-Nummer	EUR
0.1	0.25	15	007-50HT-15NB-.25	510.00
0.18	0.1	40	007-50HT-40HS-.1F	930.00
0.18	0.1	50	007-50HT-50HS-.1F	965.00
0.25	0.1	10	007-50HT-10-0.1F	640.00
0.25	0.1	15	007-50HT-15-0.1F	695.00
0.25	0.1	25	007-50HT-25-0.1F	890.00
0.25	0.1	25	007-50HT-30-0.1F	905.00
0.25	0.1	50	007-50HT-50-0.1F	945.00
0.25	0.1	60	007-50HT-60-0.1F	1085.00
0.32	0.1	15	007-50HT-15W-0.1F	510.00
0.32	0.1	25	007-50HT-25W-0.1F	910.00
0.53	0.1	10	007-50HT-10V-0.1F	370.00
0.53	1	10	007-50HT-10V-1.0F	370.00
0.53	1	50	007-50HT-50V-1.0F	1090.00
0.25	0.1	15	007-5HT-15-0.1F	395.00
0.25	0.1	60	007-5HT-60-0.1F	1085.00
0.25	0.5	15	007-5HT-15-0.5F	350.00
0.32	0.1	10	007-5HT-10W-0.1F	410.00
0.32	0.1	15	007-5HT-15W-0.1F	415.00
0.32	0.1	25	007-5HT-25W-0.1F	655.00
0.32	0.1	30	007-5HT-30W-0.1F	655.00
0.32	0.5	15	007-5HT-15W-0.5F	415.00
0.53	0.5	6	007-5HT-6V-0.5F	340.00

ID/mm	FD/µm	L/m	Artikel-Nummer	EUR
0.32	0.25	30	007-35-30W-0.25F	620.00
0.32	0.25	50	007-35-50W-0.25F	990.00
0.32	0.25	60	007-35-60W-0.25F	1020.00
0.32	0.3	15	007-35-15W-0.3F	365.00
0.32	0.3	25	007-35-25W-0.3F	545.00
0.32	0.3	50	007-35-50W-0.3F	990.00
0.32	0.5	25	007-35-25W-0.5F	545.00
0.32	0.5	30	007-35-30W-0.5F	620.00
0.32	0.5	50	007-35-50W-0.5F	990.00
0.32	0.5	60	007-35-60W-0.5F	1020.00
0.32	1	25	007-35-25W-1.0F	545.00
0.32	1	30	007-35-30W-1.0F	600.00
0.32	1.5	30	007-35-30W-1.5F	620.00
0.32	2.05	25	007-35-25W-2.05F	545.00
0.32	3	15	007-35-15W-3.0F	365.00
0.32	5	10	007-35-10W-5.0F	350.00
0.32	5	30	007-35-30W-5.0F	620.00
0.32	5	60	007-35-60W-5.0F	1020.00
0.53	0.1	10	007-35-10V-0.1F	365.00
0.53	0.25	30	007-35-30V-0.25F	675.00
0.53	0.5	10	007-35-10V-0.5F	365.00
0.53	1	15	007-35-15V-1.0F	385.00
0.53	1	25	007-35-25V-1.0F	650.00
0.53	1	30	007-35-30V-1.0F	675.00
0.53	1.2	10	007-35-10V-1.2F	365.00
0.53	1.2	15	007-35-15V-1.2F	385.00
0.53	1.2	25	007-35-25V-1.2F	650.00
0.53	1.2	30	007-35-30V-1.2F	675.00
0.53	2	10	007-35-10V-2.0F	365.00
0.53	2	15	007-35-15V-2.0F	385.00
0.53	2	25	007-35-25V-2.0F	650.00
0.53	2	30	007-35-30V-2.0F	675.00
0.53	2.6	10	007-35-10V-2.6F	365.00
0.53	2.6	30	007-35-30V-2.6F	675.00
0.53	3	10	007-35-10V-3.0F	365.00
0.53	3	25	007-35-25V-3.0F	650.00
0.53	3.5	30	007-35-30V-3.5F	675.00
0.53	5	25	007-35-25V-5.0F	650.00
0.53	5	30	007-35-30V-5.0F	675.00

Preisinfo online: [www.c-h-m.de](http://www.c-h-m.de) unter Quadrex



## Quadrex 007-17

**50% Phenylmethylpolysiloxan**  
mittel polar, chemisch gebunden

**Temperaturbereich:**

Film 0.10-1.00µm : 40°C bis 325°C  
Film 2.00-3.00µm : 40°C bis 300°C

**Ähnliche Phasen:** DB-17, HP-17, HP-50+, Rtx-50, SPB-2250, SPB-50, AT-50, CPSil-20CB



**USP Phasen Spezifikation: G3**

ID/mm	FD/µm	L/m	Artikel-Nummer	EUR
0.1	0.05	10	007-17-10NB-0.05F	360.00
0.1	0.05	12	007-17-12NB-0.05F	370.00
0.1	0.05	25	007-17-25NB-0.05F	545.00
0.1	0.1	2	007-17-2NB-0.1F	260.00
0.1	0.1	5	007-17-5NB-0.1F	325.00
0.1	0.1	10	007-17-10NB-0.10F	360.00
0.1	0.1	10	007-17-10NB-0.1F	360.00
0.1	0.1	12	007-17-12NB-0.1F	370.00
0.1	0.1	15	007-17-15NB-0.1F	375.00
0.1	0.1	25	007-17-25NB-0.1F	545.00
0.1	0.1	50	007-17-50NB-0.1F	945.00
0.1	0.25	10	007-17-10NB-0.25F	360.00
0.1	0.25	15	007-17-15NB-0.25F	375.00
0.1	0.25	25	007-17-25NB-0.25F	545.00
0.1	0.5	10	007-17-10NB-0.5F	360.00
0.1	0.5	15	007-17-15NB-0.5F	375.00
0.1	1	10	007-17-10NB-1.0F	745.00
0.1	1	15	007-17-15NB-1.0F	805.00
0.1	2	20	007-17-20NB-2.0F	805.00
0.1	3.5	4	007-17-4NB-3.5F	400.00
0.18	0.1	10	007-17-10HS-0.1F	335.00
0.18	0.1	30	007-17-30HS-0.1F	590.00
0.18	0.2	25	007-17-25HS-0.2F	545.00
0.18	0.25	15	007-17-15HS-0.25F	360.00
0.18	0.25	25	007-17-25HS-0.25F	545.00
0.18	0.33	25	007-17-25HS-0.33F	545.00
0.18	1.5	25	007-17-25HS-1.5F	545.00
0.25	0.01	25	007-17-25-0.01F	535.00
0.25	0.1	15	007-17-15-0.1F	350.00
0.25	0.1	25	007-17-25-0.1F	535.00
0.25	0.1	30	007-17-30-0.1F	455.00
0.25	0.1	50	007-17-50-0.1F	910.00
0.25	0.15	15	007-17-15-0.15F	335.00
0.25	0.15	30	007-17-30-0.15F	455.00
0.25	0.25	10	007-17-10-0.25F	345.00
0.25	0.25	15	007-17-15-0.25F	350.00
0.25	0.25	20	007-17-20-0.25F	535.00
0.25	0.25	25	007-17-25-0.25F	535.00
0.25	0.25	30	007-17-30-0.25F	455.00
0.25	0.25	50	007-17-50-0.25F	910.00
0.25	0.25	60	007-17-60-0.25F	775.00
0.25	0.25	75	007-17-75-0.25F	1035.00
0.25	0.25	100	007-17-100-0.25F	1125.00
0.25	0.33	25	007-17-25-0.33F	515.00
0.25	0.5	15	007-17-15-0.5F	350.00
0.25	0.5	25	007-17-25-0.5F	535.00
0.25	0.5	30	007-17-30-0.5F	455.00
0.25	0.5	50	007-17-50-0.5F	910.00
0.25	0.5	60	007-17-60-0.5F	775.00
0.25	1	15	007-17-15-1.0F	350.00
0.25	1	25	007-17-25-1.0F	535.00
0.25	1	30	007-17-30-1.0F	455.00
0.25	1	50	007-17-50-1.0F	910.00
0.25	1	60	007-17-60-1.0F	775.00
0.25	2	25	007-17-25-2.0F	745.00
0.25	3	15	007-17-15-3.0F	490.00
0.32	0.1	10	007-17-10W-0.1F	350.00
0.32	0.1	15	007-17-15W-0.1F	365.00
0.32	0.1	25	007-17-25W-0.1F	545.00
0.32	0.1	50	007-17-50W-0.1F	990.00
0.32	0.1	100	007-17-100W-0.1F	1355.00
0.32	0.15	15	007-17-15W-0.15F	365.00
0.32	0.15	30	007-17-30W-0.15F	620.00
0.32	0.15	60	007-17-60W-0.15F	1020.00

ID/mm	FD/µm	L/m	Artikel-Nummer	EUR
0.32	0.25	10	007-17-10W-0.25F	350.00
0.32	0.25	15	007-17-15W-0.25F	365.00
0.32	0.25	25	007-17-25W-0.25F	545.00
0.32	0.25	30	007-17-30W-0.25F	620.00
0.32	0.25	50	007-17-50W-0.25F	990.00
0.32	0.3	25	007-17-25W-0.3F	545.00
0.32	0.5	10	007-17-10W-0.5F	350.00
0.32	0.5	15	007-17-15W-0.5F	365.00
0.32	0.5	25	007-17-25W-0.5F	545.00
0.32	0.5	30	007-17-30W-0.5F	620.00
0.32	0.5	50	007-17-50W-0.5F	990.00
0.32	0.52	25	007-17-25W-0.52F	545.00
0.32	1	15	007-17-15W-1.0F	365.00
0.32	1	25	007-17-25W-1.0F	545.00
0.32	1	30	007-17-30W-1.0F	620.00
0.32	1	50	007-17-50W-1.0F	990.00
0.32	1	60	007-17-60W-1.0F	1020.00
0.32	1	100	007-17-100W-1.0F	1355.00
0.32	1.5	25	007-17-25W-1.5F	545.00
0.32	2	10	007-17-10W-2.0F	350.00
0.32	2	15	007-17-15W-2.0F	365.00
0.32	2	25	007-17-25W-2.0F	545.00
0.32	2	30	007-17-30W-2.0F	620.00
0.32	2	50	007-17-50W-2.0F	990.00
0.32	3	10	007-17-10W-3.0F	350.00
0.32	3	15	007-17-15W-3.0F	365.00
0.32	3	25	007-17-25W-3.0F	545.00
0.32	3	30	007-17-30W-3.0F	620.00
0.32	3	50	007-17-50W-3.0F	990.00
0.32	5	10	007-17-10W-5.0F	350.00
0.32	5	15	007-17-15W-5.0F	365.00
0.32	5	50	007-17-50W-5.0F	1155.00
0.32	5	60	007-17-60W-5.0F	1100.00
0.32	6	30	007-17-30W-6.0F	1085.00
0.53	0.1	15	007-17-15V-0.1F	385.00
0.53	0.1	30	007-17-30V-0.1F	675.00
0.53	0.1	50	007-17-50V-0.1F	1060.00
0.53	0.15	30	007-17-30V-0.15F	675.00
0.53	0.2	10	007-17-10V-0.2F	365.00
0.53	0.25	10	007-17-10V-0.25F	365.00
0.53	0.25	15	007-17-15V-0.25F	385.00
0.53	0.25	25	007-17-25V-0.25F	650.00
0.53	0.25	30	007-17-30V-0.25F	675.00
0.53	0.5	10	007-17-10V-0.5F	365.00
0.53	0.5	15	007-17-15V-0.5F	385.00
0.53	0.5	25	007-17-25V-0.5F	650.00
0.53	0.5	30	007-17-30V-0.5F	675.00
0.53	0.5	60	007-17-60V-0.5F	1070.00
0.53	1	10	007-17-10V-1.0F	365.00
0.53	1	15	007-17-15V-1.0F	385.00
0.53	1	25	007-17-25V-1.0F	650.00
0.53	1	30	007-17-30V-1.0F	675.00
0.53	1	50	007-17-50V-1.0F	1060.00
0.53	1	60	007-17-60V-1.0F	1070.00
0.53	1.5	15	007-17-15V-1.5F	385.00
0.53	1.5	25	007-17-25V-1.5F	650.00
0.53	1.5	30	007-17-30V-1.5F	675.00
0.53	2	5	007-17-5V-2.0F	305.00
0.53	2	10	007-17-10V-2.0F	365.00
0.53	2	15	007-17-15V-2.0F	385.00
0.53	2	25	007-17-25V-2.0F	650.00
0.53	2	30	007-17-30V-2.0F	675.00
0.53	2	50	007-17-50V-2.0F	1060.00
0.53	2.5	10	007-17-10V-2.5F	365.00
0.53	3	10	007-17-10V-3.0F	365.00
0.53	3	15	007-17-15V-3.0F	385.00
0.53	3	25	007-17-25V-3.0F	650.00
0.53	3	30	007-17-30V-3.0F	675.00
0.53	3	50	007-17-50V-3.0F	1060.00
0.53	3	60	007-17-60V-3.0F	1070.00
0.53	4	15	007-17-15V-4.0F	385.00
0.53	5	15	007-17-15V-5.0F	385.00
0.53	5	25	007-17-25V-5.0F	650.00
0.53	6	30	007-17-30V-6.0F	795.00
0.53	18	25	007-17-25V-18.0F	1250.00
0.75	0.1	5	007-17-5SF-0.1F	325.00

Sie erhalten auch Säulen von Agilent, CS, GS-Tek, MN, Ohio Valley, Quadrex, RESTEK, SGE, Varian

## Quadrex 007-65HT

**65% Phenylmethylpolysiloxan**  
mittel polar, chemisch gebunden

**Temperaturbereich:**

Film 0.10-1.00µm : 40°C bis 325°C

Film 2.00-3.00µm : 40°C bis 300°C

**Ähnliche Phasen:** Rtx-65HT, TAB-CB



ID/mm	FD/µm	L/m	Artikel-Nummer	EUR
0.1	0.1	10	007-65HT-10NB-.1F	450.00
0.1	0.1	10	007-65HT-10NB-0.1	450.00
0.1	0.1	15	007-65HT-15NB-.1F	520.00
0.1	0.1	25	007-65HT-25NB-.1F	945.00
0.1	0.15	15	007-65HT-15NB-.15	520.00
0.1	0.2	10	007-65HT-10NB-.2F	450.00
0.1	0.25	30	007-65HT-30NB-.25	985.00
0.1	0.25		007-65HT-10NB-.25	450.00
0.18	0.1	15	007-65HT-15HS-.1F	520.00
0.18	0.1	30	007-65HT-30HS-.1F	985.00
0.18	0.1	50	007-65HT-50HS-.1F	1315.00
0.18	0.25	10	007-65HT-10HS-.25	450.00
0.25	0.1	10	007-65HT-10-0.1F	660.00
0.25	0.1	15	007-65HT-15-0.1F	710.00
0.25	0.1	25	007-65HT-25-0.1F	905.00
0.25	0.1	30	007-65HT-30-0.1F	965.00

ID/mm	FD/µm	L/m	Artikel-Nummer	EUR
0.25	0.1	60	007-65HT-60-0.1F	1315.00
0.25	0.1	100	007-65HT-100-0.1F	1605.00
0.25	0.25	10	007-65HT-10-0.25F	670.00
0.25	0.25	15	007-65HT-15-0.25F	710.00
0.25	0.25	25	007-65HT-25-0.25F	905.00
0.25	0.25	30	007-65HT-30-0.25F	965.00
0.25	0.25	50	007-65HT-50-0.25F	1215.00
0.25	0.25	60	007-65HT-60-0.25F	1315.00
0.25	0.25	100	007-65HT-100-.25F	1605.00
0.25	0.5	25	007-65HT-25-0.5F	905.00
0.25	0.5	30	007-65HT-30-0.5F	965.00
0.25	1	30	007-65HT-30-1.0F	965.00
0.32	0.1	10	007-65HT-10W-0.1F	570.00
0.32	0.1	15	007-65HT-15W-0.1F	715.00
0.32	0.1	25	007-65HT-25W-0.1F	930.00
0.32	0.1	30	007-65HT-30W-0.1F	950.00
0.32	0.1	60	007-65HT-60W-0.1F	1315.00
0.32	0.15	25	007-65HT-25W-.15F	930.00
0.32	0.25	15	007-65HT-15W-.25F	715.00
0.32	1	30	007-65HT-30W-1.0F	950.00
0.53	0.1	15	007-65HT-15V-0.1F	575.00
0.53	0.1	25	007-65HT-25V-0.1F	815.00
0.53	0.1	30	007-65HT-30V-0.1F	865.00
0.53	0.15	25	007-65HT-25V-.15F	815.00
0.53	0.15	30	007-65HT-30V-.15F	865.00

## Quadrex 007-1301

**6% Cyanopropylphenyl-**  
leicht polar, chemisch gebunden

**Temperaturbereich:**

Film 0.10-1.00µm : -30°C bis 320°C

Film 2.00-3.00µm : -30°C bis 300°C

**Ähnliche Phasen:** DB-1301, HP-1301, Rtx-1301, SPB-1301



**USP Phasenspezifikation:** G43

ID/mm	FD/µm	L/m	Artikel-Nummer	EUR
0.1	0.1	10	007-1301-10NB-.1F	360.00
0.1	0.1	15	007-1301-15NB-.1F	405.00
0.1	0.1	20	007-1301-20NB-.1F	545.00
0.1	0.4	20	007-1301-20NB-.4F	545.00
0.1	0.5	10	007-1301-10NB-.5F	360.00
0.1	0.5	30	007-1301-30NB-.5F	620.00
0.25	0.1	60	007-1301-60-0.1F	775.00
0.25	0.25	15	007-1301-15-0.25F	350.00
0.25	0.25	30	007-1301-30-0.25F	455.00
0.25	0.25	30	007-1301-30-8.0F	825.00
0.25	0.25	10	007-1301-100-.25F	1285.00
0.25	0.5	15	007-1301-15-0.5F	350.00

ID/mm	FD/µm	L/m	Artikel-Nummer	EUR
0.25	0.5	30	007-1301-30-0.5F	455.00
0.32	0.5	15	007-1301-15W-0.5F	365.00
0.32	0.5	50	007-1301-50W-0.5F	990.00
0.32	1	30	007-1301-30W-1.0F	620.00
0.32	1	50	007-1301-50W-1.0F	990.00
0.32	1.8	30	007-1301-30W-1.8F	620.00
0.32	2	10	007-1301-10W-2.0F	350.00
0.32	2	30	007-1301-30W-2.0F	620.00
0.32	3	30	007-1301-30W-3.0F	630.00
0.53	0.25	50	007-1301-50V-.25F	1060.00
0.53	0.3	30	007-1301-30V-0.3F	700.00
0.53	0.5	10	007-1301-10V-0.5F	365.00
0.53	0.5	15	007-1301-15V-0.5F	385.00
0.53	0.5	30	007-1301-30V-0.5F	675.00
0.53	1	15	007-1301-15V-1.0F	385.00
0.53	1	30	007-1301-30V-1.0F	675.00
0.53	1	60	007-1301-60V-1.0F	1085.00
0.53	1.5	15	007-1301-15V-1.5F	385.00
0.53	1.8	30	007-1301-30V-1.8F	700.00
0.53	3	30	007-1301-30V-3.0F	675.00
0.53	3	60	007-1301-60V-3.0F	1085.00
0.53	3	60	007-1301-60V-5.0F	1085.00
0.53	3	75	007-1301-75V-3.0F	1335.00
0.1	0.5	30	007-1701-30NB-.5F	620.00

**Applikationen:** [www.quadrexcorp.com](http://www.quadrexcorp.com)

**Preisinfo online:** [www.c-h-m.de](http://www.c-h-m.de) unter **Quadrex**

## Quadrex 007-1701

14% Cyanopropylphenyl-  
mittel polar, chemisch gebunden

**Temperaturbereich:**

Film 0.10-1.00µm : -20°C bis 280°C  
Film 0.10-1.00µm : -20°C bis 260°C

**Ähnliche Phasen:** DB-1701, Rtx-1701,  
SPB-1701, AT-1701, BP-10, CPSil-19CB



**USP Phasen Spezifikation:** G46

ID/mm	FD/µm	L/m	Artikel-Nummer	EUR
0.1	0.01	20	007-1701-20NB-.01	545.00
0.1	0.03	10	007-1701-10NB-.03	360.00
0.1	0.03	15	007-1701-15NB-.03	360.00
0.1	0.05	10	007-1701-10NB-.05	360.00
0.1	0.05	15	007-1701-15NB-.05	360.00
0.1	0.1	10	007-1701-10NB-.1F	360.00
0.1	0.1	15	007-1701-15NB-.1F	360.00
0.1	0.1	20	007-1701-20NB-.1F	545.00
0.1	0.1	20	007-1701-20NB-.5F	545.00
0.1	0.14	10	007-1701-10NB-.14	360.00
0.1	0.14	20	007-1701-20NB-.14	545.00
0.1	0.2	15	007-1701-15NB-.2F	360.00
0.1	0.25	10	007-1701-10NB-.25	360.00
0.1	0.25	15	007-1701-15NB-.25	360.00
0.1	0.4	15	007-1701-15NB-.4F	360.00
0.1	0.5	4	007-1701-4NB-.05F	325.00
0.1	0.5	6	007-1701-6NB-.05F	325.00
0.1	0.5	7	007-1701-7NB-.05F	325.00
0.1	0.5	8	007-1701-8NB-.05F	325.00
0.1	0.5	10	007-1701-10NB-.5F	360.00
0.1	0.5	12	007-1701-12NB-.5F	375.00
0.1	0.5	15	007-1701-15NB-.5F	360.00
0.1	1	5	007-1701-5NB-1.0F	375.00
0.1	2	15	007-1701-15NB-2.F	895.00
0.1	3.5	5	007-1701-5NB-3.5F	465.00
0.1	3.5	10	007-1701-10NB-3.5	805.00
0.1	3.5	20	007-1701-20NB-3.5	1010.00
0.18	0.18	15	007-1701-15HS-.18	360.00
0.18	0.25	10	007-1701-10HS-.25	335.00
0.18	0.25	15	007-1701-15HS-.25	360.00
0.18	0.25	30	007-1701-30HS-.25	590.00
0.18	0.25	50	007-1701-50HS-.25	910.00
0.18	0.4	10	007-1701-10HS-.4F	335.00
0.18	0.5	10	007-1701-10HS-.5F	335.00
0.18	0.5	15	007-1701-15HS-.5F	360.00
0.18	0.5	30	007-1701-30HS-.5F	590.00
0.18	0.5	60	007-1701-60HS-.5F	970.00
0.18	1	15	007-1701-15HS-1.0	360.00
0.18	2	15	007-1701-15HS-2.0	925.00
0.18	4	15	007-1701-15HS-4.0	925.00
0.23	0.1	50	007-1701-50W-0.1F	990.00
0.25	0.1	30	007-1701-30-0.1F	455.00
0.25	0.1	50	007-1701-50-0.1F	910.00
0.25	0.15	30	007-1701-30-0.15F	455.00
0.25	0.2	100	007-1701-100-0.2F	1145.00
0.25	0.25	15	007-1701-15-0.25F	350.00
0.25	0.25	30	007-1701-30-0.25F	455.00
0.25	0.25	50	007-1701-50-0.25F	910.00
0.25	0.25	60	007-1701-60-0.25F	775.00
0.25	0.5	15	007-1701-15-0.5F	350.00
0.25	0.5	30	007-1701-30-0.5F	455.00
0.25	0.5	50	007-1701-50-0.5F	910.00
0.25	0.5	60	007-1701-60-0.5F	775.00
0.25	0.5	100	007-1701-100-0.5F	1145.00
0.25	1	15	007-1701-15-1.0F	350.00
0.25	1	30	007-1701-30-1.0F	455.00
0.25	1	50	007-1701-50-1.0F	910.00
0.25	1	60	007-1701-60-1.0F	775.00
0.25	1	100	007-1701-100-1.0F	1145.00
0.25	2	30	007-1701-30-2.0F	850.00
0.25	5	30	007-1701-30-5.0F	945.00
0.32	0.1	15	007-1701-15W-0.1F	365.00
0.32	0.1	30	007-1701-30W-0.1F	620.00
0.32	0.25	15	007-1701-15W-.25F	365.00

ID/mm	FD/µm	L/m	Artikel-Nummer	EUR
0.32	0.25	30	007-1701-30W-.25F	620.00
0.32	0.25	50	007-1701-50W-.25F	990.00
0.32	0.25	60	007-1701-60W-.25F	1020.00
0.32	0.35	60	007-1701-60W-.35F	1020.00
0.32	0.5	10	007-1701-10W-0.5F	350.00
0.32	0.5	15	007-1701-15W-0.5F	365.00
0.32	0.5	30	007-1701-30W-0.5F	620.00
0.32	0.5	50	007-1701-50W-0.5F	990.00
0.32	1	6	007-1701-6W-1.0F	350.00
0.32	1	10	007-1701-10W-1.0F	350.00
0.32	1	12	007-1701-12W-1.0F	365.00
0.32	1	15	007-1701-15W-1.0F	365.00
0.32	1	30	007-1701-30W-1.0F	620.00
0.32	1	50	007-1701-50W-1.0F	990.00
0.32	1	60	007-1701-60W-1.0F	1020.00
0.32	1	75	007-1701-75W-1.0F	1225.00
0.32	1	100	007-1701-100W-1.0	1495.00
0.32	1.5	60	007-1701-60W-1.5F	1020.00
0.32	1.8	30	007-1701-30W-1.8F	620.00
0.32	2	15	007-1701-15W-2.0F	365.00
0.32	2	30	007-1701-30W-2.0F	620.00
0.32	2	50	007-1701-50W-2.0F	990.00
0.32	2	60	007-1701-60W-2.0F	1020.00
0.32	3	10	007-1701-10W-3.0F	350.00
0.32	3	15	007-1701-15W-3.0F	365.00
0.32	3	30	007-1701-30W-3.0F	620.00
0.32	3	50	007-1701-50W-3.0F	990.00
0.32	3	60	007-1701-60W-3.0F	1020.00
0.32	3	105	007-1701-105W-3.F	1500.00
0.32	4	15	007-1701-15W-4.0F	365.00
0.53	0.1	30	007-1701-30V-0.1F	675.00
0.53	0.25	10	007-1701-10V-.25F	365.00
0.53	0.25	50	007-1701-50V-.25F	1060.00
0.53	0.5	10	007-1701-10V-0.5F	365.00
0.53	0.5	15	007-1701-15V-0.5F	385.00
0.53	0.5	30	007-1701-30V-0.5F	675.00
0.53	0.5	50	007-1701-50V-0.5F	1060.00
0.53	1	10	007-1701-10V-1.0F	365.00
0.53	1	15	007-1701-15V-1.0F	385.00
0.53	1	30	007-1701-30V-1.0F	675.00
0.53	1	50	007-1701-50V-1.0F	1060.00
0.53	1	60	007-1701-60V-1.0F	1070.00
0.53	1.5	15	007-1701-15V-1.5F	385.00
0.53	2	10	007-1701-10V-2.0F	365.00
0.53	2	15	007-1701-15V-2.0F	385.00
0.53	2	30	007-1701-30V-2.0F	675.00
0.53	2	50	007-1701-50V-2.0F	1060.00
0.53	2	60	007-1701-60V-2.0F	1070.00
0.53	2.2	10	007-1701-10V-2.2F	365.00
0.53	3	5	007-1701-5V-3.0F	295.00
0.53	3	10	007-1701-10V-3.0F	365.00
0.53	3	15	007-1701-15V-3.0F	385.00
0.53	3	20	007-1701-20V-3.0F	650.00
0.53	3	30	007-1701-30V-3.0F	675.00
0.53	3	50	007-1701-50V-3.0F	1060.00
0.53	3	60	007-1701-60V-3.0F	1070.00
0.53	5	50	007-1701-50V-5.0F	1060.00
0.53		100	007-1701-100V-1.0	1495.00
0.53		100	007-1701-100V-2.0	1695.00



Sie erhalten auch Säulen von Agilent, CS, GS-Tek, MN, Ohio Valley, Quadrex, RESTEK, SGE, Varian

## Quadrex 007-225

**50% Cyanopropylphenyl-**  
polar, chemisch gebunden

**Temperaturbereich:**

Film 0.10-1.00µm : 40°C bis 240°C  
Film 2.00-3.00µm : 40°C bis 200°C

**Ähnliche Phasen:** DB-225, Rtx-225, SP-2300, AT-225, BP-225, CPSil-43CB

**USP Phasen Spezifikation:** G19

ID/mm	FD/µm	L/m	Artikel-Nummer	EUR
0.1	0.05	10	007-225-10NB-0.05	360.00
0.1	0.1	10	007-225-10NB-0.10	360.00
0.1	0.1	10	007-225-10NB-0.1F	360.00
0.1	0.1	15	007-225-15NB-0.1F	375.00
0.1	0.1	20	007-225-20NB-0.1F	500.00
0.1	0.25	15	007-225-15NB-.25F	360.00
0.1	0.25	20	007-225-20NB-.25F	500.00
0.1	0.5	15	007-225-15NB-0.5F	360.00
0.18	0.2	20	007-225-20HS-0.2F	500.00
0.18	0.25	15	007-225-15HS-.25F	360.00
0.18	0.25	50	007-225-50HS-0.25	910.00
0.18	0.4	12	007-225-12NB-0.4F	375.00
0.18	0.5	10	007-225-10HS-0.5F	335.00
0.18	0.5	15	007-225-15HS-0.5F	360.00
0.18	0.5	30	007-225-30HS-0.5F	590.00
0.25	0.1	15	007-225-15-0.1F	365.00
0.25	0.1	30	007-225-30-0.1F	465.00
0.25	0.1	75	007-225-75-0.1F	1035.00
0.25	0.15	15	007-225-15-0.15F	365.00
0.25	0.2	15	007-225-15-0.20F	365.00
0.25	0.2	15	007-225-15-0.2F	365.00
0.25	0.2	30	007-225-30-0.2F	465.00
0.25	0.2	50	007-225-50-0.2F	910.00
0.25	0.25	15	007-225-15-0.25F	365.00
0.25	0.25	30	007-225-30-0.25F	465.00
0.25	0.25	50	007-225-50-0.25F	910.00
0.25	0.25	60	007-225-60-0.25F	775.00
0.25	0.5	15	007-225-15-0.5F	365.00
0.25	0.5	30	007-225-30-0.5F	465.00
0.25	0.5	50	007-225-50-0.5F	910.00
0.25	0.5	60	007-225-60-0.5F	775.00
0.25	1	15	007-225-15-1.0F	365.00
0.25	1	30	007-225-30-1.0F	465.00
0.25	1	50	007-225-50-1.0F	910.00
0.25	1	60	007-225-60-1.0F	775.00
0.25	1.2	30	007-225-30-1.2F	465.00
0.32	0.1	10	007-225-10W-0.1F	350.00



ID/mm	FD/µm	L/m	Artikel-Nummer	EUR
0.32	0.1	15	007-225-15W-0.1F	365.00
0.32	0.1	30	007-225-30W-0.1F	620.00
0.32	0.1	50	007-225-50W-0.1F	990.00
0.32	0.15	15	007-225-15W-0.15F	365.00
0.32	0.25	10	007-225-10W-0.25F	350.00
0.32	0.25	15	007-225-15W-0.25F	365.00
0.32	0.25	30	007-225-30W-0.25F	620.00
0.32	0.25	50	007-225-50W-0.25F	990.00
0.32	0.25	60	007-225-60W-0.25F	1020.00
0.32	0.3	10	007-225-10W-0.3F	350.00
0.32	0.3	30	007-225-30W-0.3F	620.00
0.32	0.3	50	007-225-50W-0.3F	990.00
0.32	0.3	60	007-225-60W-0.3F	1020.00
0.32	0.5	10	007-225-10W-0.5F	350.00
0.32	0.5	15	007-225-15W-0.5F	365.00
0.32	0.5	30	007-225-30W-0.5F	620.00
0.32	0.5	50	007-225-50W-0.5F	990.00
0.32	1	15	007-225-15W-1.0F	365.00
0.32	1	30	007-225-30W-1.0F	620.00
0.32	1	50	007-225-50W-1.0F	990.00
0.32	1	60	007-225-60W-1.0F	1020.00
0.32	1	75	007-225-75W-1.0F	1225.00
0.32	1	100	007-225-100W-1.0F	1355.00
0.32	1.8	30	007-225-30W-1.8F	620.00
0.32	3	10	007-225-10W-3.0F	365.00
0.32	3	30	007-225-30W-3.0F	620.00
0.53	0.1	15	007-225-15V-0.1F	385.00
0.53	0.25	15	007-225-15V-0.25F	385.00
0.53	0.25	30	007-225-30V-0.25F	675.00
0.53	0.25	50	007-225-50V-0.25F	1060.00
0.53	0.5	15	007-225-15V-0.5F	385.00
0.53	0.5	30	007-225-30V-0.5F	675.00
0.53	1	10	007-225-10V-1.0F	365.00
0.53	1	15	007-225-15V-1.0F	385.00
0.53	1	30	007-225-30V-1.0F	675.00
0.53	1	50	007-225-50V-1.0F	1060.00
0.53	1.2	10	007-225-10V-1.2F	365.00
0.53	1.2	15	007-225-15V-1.2F	385.00
0.53	1.2	30	007-225-30V-1.2F	675.00
0.53	1.5	6	007-225-6V-1.5F	345.00
0.53	1.5	30	007-225-30V-1.5F	675.00
0.53	1.5	50	007-225-50V-1.5F	1060.00
0.53	1.8	10	007-225-10V-1.8F	365.00
0.53	2	50	007-225-50V-2.0F	1060.00
0.53	3	10	007-225-10V-3.0F	365.00
0.53	3	15	007-225-15V-3.0F	385.00
0.53	3	30	007-225-30V-3.0F	675.00

## Quadrex 007-23

**78% Cyanopropylphenyl-**  
sehr polar, chemisch gebunden

**Temperaturbereich:**

Film 0.10-1.00µm : 40°C bis 280°C

**Ähnliche Phasen:** DB-23, Rtx-2330, SP-2330, AT-Silar, BPx-70, CPSil-88



ID/mm	FD/µm	L/m	Artikel-Nummer	EUR
0.2	0.2	50	007-23-50P-0.2F	1255.00
0.25	0.2	30	007-23-30-0.2F	815.00
0.25	0.25	30	007-23-30-0.25F	815.00
0.25	0.25	50	007-23-50-0.25F	1255.00
0.25	0.25	60	007-23-60-0.25F	1275.00
0.32	0.25	30	007-23-30W-0.25F	825.00
0.32	0.25	60	007-23-60W-0.25F	1395.00

**Applikationen:** [www.quadrexcorp.com](http://www.quadrexcorp.com)

**Preisinfo online:** [www.c-h-m.de](http://www.c-h-m.de) unter **Quadrex**

## Quadrex 007-CW

### Polyethylenglycol (PEG)

mittelpolar, chemisch gebunden

#### Temperaturbereich:

Film 0.10-1.00µm : 20°C bis 260/280°C

Film 2.00-5.00µm : 20°C bis 220/240°C

Ähnliche Phasen: DB-Wax, Stabilwax, AT-

Wax, HP-20M, HP-Innowax, Supelcowax-10, BP-20, CPWax-52CB



ID/mm	FD/µm	L/m	Artikel-Nummer	EUR
0.1	0.1	10	007-CW-10NB-0.1F	385.00
0.1	0.1	15	007-CW-15NB-0.1F	405.00
0.1	0.14	20	007-CW-20NB-0.14F	585.00
0.1	0.15	15	007-CW-15NB-0.15F	405.00
0.1	0.18	20	007-CW-20HS-0.18F	585.00
0.1	0.2	10	007-CW-10NB-0.2F	385.00
0.1	0.25	10	007-CW-10NB-.25F	385.00
0.1	0.25	15	007-CW-15NB-0.25F	405.00
0.1	0.25	20	007-CW-20NB-0.25F	585.00
0.1	0.25	50	007-CW-50NB-0.25F	975.00
0.1	0.5	6	007-CW-6NB-0.5F	460.00
0.1	0.5	10	007-CW-10NB-0.5F	385.00
0.1	0.5	30	007-CW-30HS-0.5F	640.00
0.1	0.5	30	007-CW-30NB-0.5F	660.00
0.1	1	5	007-CW-5NB-1.0F	230.00
0.1	1	15	007-CW-15NB-1.0F	495.00
0.1	1.3	10	007-CW-10NB-1.3F	915.00
0.1	2	10	007-CW-10NB-2.0F	915.00
0.18	0.1	50	007-CW-50HS-0.1F	975.00
0.18	0.15	15	007-CW-15HS-0.15F	385.00
0.18	0.15	20	007-CW-20HS-0.15F	585.00
0.18	0.2	15	007-CW-15HS-0.2F	385.00
0.18	0.25	15	007-CW-15HS-0.25F	385.00
0.18	0.25	30	007-CW-30HS-0.25F	640.00
0.18	0.25	40	007-CW-40HS-.25F	930.00
0.18	0.25	40	007-CW-40HS-0.25F	930.00
0.18	0.25	50	007-CW-50HS-0.25F	975.00
0.18	0.4	10	007-CW-10HS-0.4F	370.00
0.18	0.5	50	007-CW-50HS-0.5F	975.00
0.25	0.1	15	007-CW-15-0.1F	375.00
0.25	0.1	50	007-CW-50-0.1F	975.00
0.25	0.1	60	007-CW-60-0.1F	830.00
0.25	0.1	75	007-CW-75-0.1F	1110.00
0.25	0.15	30	007-CW-30-0.15F	480.00
0.25	0.15	30	007-CW-30-0.1F	480.00
0.25	0.2	30	007-CW-30-0.2F	480.00
0.25	0.2	50	007-CW-50-0.2F	975.00
0.25	0.2	60	007-CW-60-0.2F	830.00
0.25	0.25	10	007-CW-10-0.25F	370.00
0.25	0.25	15	007-CW-15-0.25F	375.00
0.25	0.25	30	007-CW-30-0.25F	480.00
0.25	0.25	50	007-CW-50-0.25F	975.00
0.25	0.25	60	007-CW-60-0.25F	830.00
0.25	0.25	75	007-CW-75-0.25F	1110.00
0.25	0.25	100	007-CW-100-0.25F	1215.00
0.25	0.33	30	007-CW-30-0.33F	480.00
0.25	0.33	60	007-CW-60-0.33F	830.00
0.25	0.5	15	007-CW-15-0.5F	375.00
0.25	0.5	30	007-CW-30-0.5F	480.00
0.25	0.5	50	007-CW-50-0.5F	975.00
0.25	0.5	60	007-CW-60-0.5F	830.00
0.25	0.5	75	007-CW-75-0.5F	1110.00
0.25	1	10	007-CW-10-1.0F	370.00
0.25	1	15	007-CW-15-1.0F	375.00
0.25	1	30	007-CW-30-1.0F	480.00
0.25	1	50	007-CW-50-1.0F	975.00
0.25	1	60	007-CW-60-1.0F	830.00
0.25	1	75	007-CW-75-1.0F	1110.00
0.25	1	100	007-CW-100V-1.0F	1650.00
0.25	3.5	20	007-CW-20-3.5F	660.00
0.32	0.1	2	007-CW-2W-0.1F	230.00
0.32	0.1	15	007-CW-15W-0.1F	395.00
0.32	0.1	50	007-CW-50W-0.1F	1065.00
0.32	0.15	30	007-CW-30W-0.15F	665.00
0.32	0.15	60	007-CW-60W-0.15F	1100.00

ID/mm	FD/µm	L/m	Artikel-Nummer	EUR
0.32	0.2	30	007-CW-30W-0.2F	665.00
0.32	0.25	2	007-CW-2W-0.25F	230.00
0.32	0.25	10	007-CW-10W-0.25F	375.00
0.32	0.25	12	007-CW-12W-0.25F	480.00
0.32	0.25	15	007-CW-15W-0.25F	395.00
0.32	0.25	30	007-CW-30W-0.25F	665.00
0.32	0.25	50	007-CW-50W-0.25F	1065.00
0.32	0.25	60	007-CW-60W-0.25F	1100.00
0.32	0.25	75	007-CW-75W-0.25F	1310.00
0.32	0.25	100	007-CW-100W-0.25F	1435.00
0.32	0.3	15	007-CW-15W-0.3F	395.00
0.32	0.3	50	007-CW-50W-0.3F	1065.00
0.32	0.33	50	007-CW-50W-0.33F	1065.00
0.32	0.5	15	007-CW-15W-0.5F	395.00
0.32	0.5	30	007-CW-30W-0.5F	665.00
0.32	0.5	50	007-CW-50W-0.5F	1065.00
0.32	0.5	60	007-CW-60W-0.5F	1100.00
0.32	0.5	100	007-CW-100W-0.5F	1435.00
0.32	1	2	007-CW-2W-1.0F	230.00
0.32	1	10	007-CW-10W-1.0F	375.00
0.32	1	15	007-CW-15W-1.0F	395.00
0.32	1	21	007-CW-21W-1.0F	585.00
0.32	1	30	007-CW-30W-1.0F	665.00
0.32	1	50	007-CW-50W-1.0F	1065.00
0.32	1	60	007-CW-60W-1.0F	1100.00
0.32	1	75	007-CW-75W-1.0F	1310.00
0.32	1	100	007-CW-100W-1.0F	1435.00
0.32	1.2	30	007-CW-30W-1.2F	665.00
0.32	1.2	50	007-CW-50W-1.2F	1065.00
0.32	1.5	30	007-CW-30W-1.5F	665.00
0.32	2	2	007-CW-2W-2.0F	230.00
0.32	2	15	007-CW-15W-2.0F	395.00
0.32	2	30	007-CW-30W-2.0F	665.00
0.32	2	50	007-CW-50W-2.0F	1065.00
0.32	2	60	007-CW-60W-2.0F	1100.00
0.32	3	2	007-CW-2W-3.0F	230.00
0.32	3	10	007-CW-10W-3.0F	375.00
0.32	3	15	007-CW-15W-3.0F	395.00
0.32	3	30	007-CW-30W-3.0F	665.00
0.32	3	50	007-CW-50W-3.0F	1065.00
0.32	3	60	007-CW-60W-3.0F	1100.00
0.32	3	75	007-CW-75W-3.0F	1310.00
0.32	5	30	007-CW-30W-5.0F	900.00
0.32	5	50	007-CW-50W-5.0F	1285.00
0.32	5	60	007-CW-60W-5.0F	1145.00
0.32	x1.2	60	007-CW-60W-1.2F	1100.00
0.53	0.1	15	007-CW-15V-0.1F	415.00
0.53	0.1	30	007-CW-30V-0.1F	715.00
0.53	0.17	30	007-CW-30V-0.17F	715.00
0.53	0.2	10	007-CW-10V-0.2F	395.00
0.53	0.25	15	007-CW-15V-0.25F	415.00
0.53	0.25	30	007-CW-30V-0.25F	715.00
0.53	0.25	60	007-CW-60V-0.25F	1140.00
0.53	0.3	30	007-CW-30V-0.3F	715.00
0.53	0.5	5	007-CW-5V-0.5F	290.00
0.53	0.5	10	007-CW-10V-0.5F	395.00
0.53	0.5	15	007-CW-15V-0.5F	415.00
0.53	0.5	30	007-CW-30V-0.5F	715.00
0.53	0.5	50	007-CW-50V-0.5F	1125.00
0.53	0.5	60	007-CW-60V-0.5F	1140.00
0.53	1	2	007-CW-2V-1.0F	230.00
0.53	1	5	007-CW-5V-1.0F	300.00
0.53	1	10	007-CW-10V-1.0F	395.00
0.53	1	15	007-CW-15V-1.0F	415.00
0.53	1	20	007-CW-20V-1.0F	685.00
0.53	1	30	007-CW-30V-1.0F	715.00
0.53	1	50	007-CW-50V-1.0F	1125.00
0.53	1	60	007-CW-60V-1.0F	1140.00
0.53	1	75	007-CW-75V-1.0F	1425.00
0.53	1.2	15	007-CW-15V-1.2F	415.00
0.53	1.2	30	007-CW-30V-1.2F	715.00
0.53	1.33	30	007-CW-30V-1.33F	715.00
0.53	1.5	15	007-CW-15V-1.5F	415.00
0.53	1.5	30	007-CW-30V-1.5F	715.00
0.53	1.5	60	007-CW-60V-1.5F	1140.00

Sie erhalten auch Säulen von Agilent, CS, GS-Tek, MN, Ohio Valley, Quadrex, RESTEK, SGE, Varian

ID/mm	FD/ $\mu$ m	L/m	Artikel-Nummer	EUR
0.53	2	7.5	007-CW-7.5V-2.0F	395.00
0.53	2	10	007-CW-10V-2.0F	395.00
0.53	2	15	007-CW-15V-2.0F	415.00
0.53	2	30	007-CW-30V-2.0F	715.00
0.53	2	50	007-CW-50V-2.0F	1125.00
0.53	2	60	007-CW-60V-2.0F	1140.00
0.53	2	75	007-CW-75V-2.0F	1425.00
0.53	2.5	75	007-CW-75V-2.5F	1425.00
0.53	3	4	007-CW-4V-3.0F	270.00
0.53	3	5	007-CW-5V-3.0F	340.00
0.53	3	10	007-CW-10V-3.0F	395.00
0.53	3	15	007-CW-15V-3.0F	415.00
0.53	3	20	007-CW-20V-3.0F	685.00
0.53	3	30	007-CW-30V-3.0F	715.00
0.53	3	35	007-CW-35V-3.0F	800.00
0.53	3	50	007-CW-50V-3.0F	1125.00
0.53	3	60	007-CW-60V-3.0F	1140.00
0.53	4	15	007-CW-15V-4.0F	510.00
0.53	4	30	007-CW-30V-4.0F	955.00
0.53	5	4	007-CW-4V-5.0F	285.00
0.53	5	6	007-CW-6V-5.0F	340.00
0.53	5	10	007-CW-10V-5.0F	500.00
0.53	5	15	007-CW-15V-5.0F	550.00
0.53	5	30	007-CW-30V-5.0F	955.00
0.53	5	50	007-CW-50V-5.0F	1370.00
0.53	5	60	007-CW-60V-5.0F	1400.00
0.53	x1.2	50	007-CW-50V-1.2F	1125.00

## Quadrex BTR-CW

**PEG, erhöht sauerstoff-fest**  
polar, chemisch gebunden

### Temperaturbereich:

Film 0.10-1.00 $\mu$ m : 20°C bis 280°C

Film 2.00-5.00 $\mu$ m : 20°C bis 240°C

**Ähnliche Phasen:** DB-Wax, Stabilwax, AT-Wax, HP-20M, HP-Innowax, Supelcowax-10, BP-20, CPWax-52CB

**USP Phasen Spezifikation:** G16

ID/mm	FD/ $\mu$ m	L/m	Artikel-Nummer	EUR
0.1	0.1	10	BTR-CW-10NB-0.1F	415.00
0.1	0.2	10	BTR-CW-10NB-0.2F	415.00
0.1	0.5	30	BTR-CW-30NB-0.5F	690.00
0.1	1	20	BTR-CW-20NB-1.0F	690.00
0.18	0.25	10	BTR-CW-10HS-0.25F	380.00
0.18	0.25	30	BTR-CW-30HS-0.25F	665.00
0.18	1	10	BTR-CW-10HS-1.0F	425.00
0.25	0.1	30	BTR-CW-30-0.1F	480.00
0.25	0.2	30	BTR-CW-30-0.2F	480.00
0.25	0.2	60	BTR-CW-60-0.2F	830.00
0.25	0.25	30	BTR-CW-30-0.25F	480.00
0.25	0.25	60	BTR-CW-60-0.25F	830.00
0.25	0.5	30	BTR-CW-30-0.5F	480.00
0.25	0.5	60	BTR-CW-60-0.5F	830.00
0.25	1	10	BTR-CW-10-1.0F	395.00
0.25	1	30	BTR-CW-30-1.0F	480.00
0.25	1	60	BTR-CW-60-1.0F	830.00
0.25	1	10	BTR-CW-100-1.0F	1235.00
0.32	0.1	30	BTR-CW-30W-0.1F	690.00
0.32	0.15	30	BTR-CW-30W-0.15F	690.00
0.32	0.2	30	BTR-CW-30W-0.2F	690.00
0.32	0.25	30	BTR-CW-30W-0.25F	690.00



ID/mm	FD/ $\mu$ m	L/m	Artikel-Nummer	EUR
0.32	0.25	60	BTR-CW-60W-0.25F	1120.00
0.32	0.5	30	BTR-CW-30W-0.5F	690.00
0.32	0.5	60	BTR-CW-60W-0.5F	1120.00
0.32	1	5	BTR-CW-5W-1.0F	295.00
0.32	1	10	BTR-CW-10W-1.0F	400.00
0.32	1	21	BTR-CW-21W-1.0F	585.00
0.32	1	30	BTR-CW-30W-1.0F	690.00
0.32	1	60	BTR-CW-60W-1.0F	1120.00
0.32	1.5	20	BTR-CW-20W-1.5F	585.00
0.32	2	30	BTR-CW-30W-2.0F	690.00
0.32	2	60	BTR-CW-60W-2.0F	1120.00
0.32	3	30	BTR-CW-30W-3.0F	690.00
0.32	3	60	BTR-CW-60W-3.0F	1120.00
0.53	0.25	10	BTR-CW-10V-0.25F	420.00
0.53	0.25	30	BTR-CW-30V-0.25F	745.00
0.53	0.5	5	BTR-CW-5V-0.5F	400.00
0.53	0.5	10	BTR-CW-10V-0.5F	420.00
0.53	0.5	30	BTR-CW-30V-0.5F	745.00
0.53	0.5	60	BTR-CW-60V-0.5F	1170.00
0.53	1	10	BTR-CW-10V-1.0F	420.00
0.53	1	30	BTR-CW-30V-1.0F	745.00
0.53	1	60	BTR-CW-60V-1.0F	1170.00
0.53	1.5	30	BTR-CW-30V-1.5F	745.00
0.53	1.5	60	BTR-CW-60V-1.5F	1170.00
0.53	2	10	BTR-CW-10V-2.0F	420.00
0.53	2	20	BTR-CW-20V-2.0F	690.00
0.53	2	30	BTR-CW-30V-2.0F	745.00
0.53	2	60	BTR-CW-60V-2.0F	1170.00
0.53	3	10	BTR-CW-10V-3.0F	420.00
0.53	3	30	BTR-CW-30V-3.0F	745.00
0.53	3	60	BTR-CW-60V-3.0F	1170.00
0.53	5	10	BTR-CW-10V-5.0F	530.00
0.53	5	30	BTR-CW-30V-5.0F	920.00
0.53	5	60	BTR-CW-60V-5.0F	1350.00

Applikationen: [www.quadrexcorp.com](http://www.quadrexcorp.com)

Preisinfo online: [www.c-h-m.de](http://www.c-h-m.de) unter Quadrex

## Quadrex 007-FFAP

mod. Polyethylenglycol (PEG)  
polar, chemisch gebunden

**Temperaturbereich:**

Film 0.10-1.00µm : 20°C bis 280°C  
Film 2.00-5.00µm : 20°C bis 240°C

**Ähnliche Phasen:** DB-FFAP, HP-FFAP,  
Stabilwax-DA, BP-21, Nukol, CPWax-58CB, AT-1000

**USP Phasenspezifikation:** G25



ID/mm	FD/µm	L/m	Artikel-Nummer	EUR
0.1	0.1	10	007-FFAP-10NB-.1F	385.00
0.1	0.1	100	007-FFAP-100NB.1	1650.00
0.1	0.25	10	007-FFAP-10NB-.25	385.00
0.1	0.5	10	007-FFAP-10NB-.5F	385.00
0.1	0.5	30	007-FFAP-30NB-.5F	660.00
0.18	0.5	10	007-FFAP-10HS-.5F	350.00
0.18	0.5	20	007-FFAP-20HS-.5F	525.00
0.18	0.5	30	007-FFAP-30HS-.5F	640.00
0.18	0.5	40	007-FFAP-40HS-.5F	930.00
0.25	0.1	10	007-FFAP-10-0.1F	370.00
0.25	0.1	60	007-FFAP-60-0.1F	830.00
0.25	0.25	30	007-FFAP-30-0.25F	480.00
0.25	0.25	60	007-FFAP-60-0.25F	830.00
0.25	0.25	100	007-FFAP-100-.25F	1215.00
0.25	0.5	10	007-FFAP-10-0.5F	370.00
0.25	0.5	30	007-FFAP-30-0.5F	480.00
0.25	0.5	60	007-FFAP-60-0.5F	830.00
0.25	0.5	100	007-FFAP-100-0.5F	1215.00
0.25	1	12.5	007-FFAP-12.5-1.F	375.00
0.25	1	30	007-FFAP-30-1.0F	480.00
0.25	1	60	007-FFAP-60-1.0F	830.00
0.25	1	75	007-FFAP-75-1.0F	1110.00
0.25	1	100	007-FFAP-100-1.0F	1215.00
0.32	0.1	30	007-FFAP-30W-0.1F	665.00
0.32	0.1	60	007-FFAP-60W-0.1F	1100.00
0.32	0.25	10	007-FFAP-10W-.25F	375.00
0.32	0.25	30	007-FFAP-30W-.25F	665.00
0.32	0.25	60	007-FFAP-60W-.25F	1100.00

ID/mm	FD/µm	L/m	Artikel-Nummer	EUR
0.32	0.3	60	007-FFAP-60W-0.3F	1100.00
0.32	0.5	10	007-FFAP-10W-0.5F	375.00
0.32	0.5	60	007-FFAP-60W-0.5F	1100.00
0.32	1	10	007-FFAP-10W-1.0F	375.00
0.32	1	30	007-FFAP-30W-1.0F	665.00
0.32	1	60	007-FFAP-60W-1.0F	1100.00
0.32	2	10	007-FFAP-10W-2.0F	375.00
0.32	2	30	007-FFAP-30W-2.0F	665.00
0.32	2	60	007-FFAP-60W-2.0F	1100.00
0.32	3	10	007-FFAP-10W-3.0F	375.00
0.32	3	30	007-FFAP-30W-3.0F	665.00
0.32	3	60	007-FFAP-60W-3.0F	1100.00
0.53	0.1	12.5	007-FFAP-12.5V.1F	415.00
0.53	0.25	10	007-FFAP-10V-.25F	395.00
0.53	0.5	10	007-FFAP-10V-0.5F	395.00
0.53	0.5	30	007-FFAP-30V-0.5F	715.00
0.53	0.5	60	007-FFAP-60V-0.5F	1140.00
0.53	1	10	007-FFAP-10V-1.0F	395.00
0.53	1	12	007-FFAP-12V-1.0F	415.00
0.53	1	12.5	007-FFAP-12.5V-1F	415.00
0.53	1	13	007-FFAP-13V-1.0F	415.00
0.53	1	30	007-FFAP-30V-1.0F	715.00
0.53	1	60	007-FFAP-60V-1.0F	1140.00
0.53	1	75	007-FFAP-75V-1.0F	1425.00
0.53	1.2	30	007-FFAP-30V-1.2F	715.00
0.53	1.5	30	007-FFAP-30V-1.5F	715.00
0.53	2	10	007-FFAP-10V-2.0F	395.00
0.53	2	30	007-FFAP-30V-2.0F	715.00
0.53	2	60	007-FFAP-60V-2.0F	1140.00
0.53	3	5	007-FFAP-5V-3.0F	300.00
0.53	3	10	007-FFAP-10V-3.0F	395.00
0.53	3	30	007-FFAP-30V-3.0F	715.00
0.53	3	60	007-FFAP-60V-3.0F	1140.00
0.53	3	100	007-FFAP-100V-3.F	1650.00
0.53	5	30	007-FFAP-30V-5.0F	855.00
0.53	5	60	007-FFAP-60V-5.0F	1310.00
0.53	x.25	30	007-FFAP-30V-.25F	715.00
0.53	x1.2	10	007-FFAP-10V-1.2F	395.00

## Quadrex PLOT

Molecular Sieve 5A Plotsäule  
zur Gas-Analyse

**Temperaturbereich:** -50 bis 300°C

**Ähnliche Phasen:** GS-Molesieve, HP-Plot  
Molsieb, RT-Msieve 5A, AT-Mole Sieve



**PLT-Q, Divinylbenzene Copolymer**  
zur Edelgas-Analyse

**Temperaturbereich:** bis 290°C

**Ähnliche Phasen:** GS-Q, HP-PLOT-Q, Rtx-Q, CP-PoroPLOT-Q

**PLT-AL2O3, ALUMINA/KCL**  
für C1-C5 Kohlenwasserstoffe

**Temperaturbereich:** bis 200°C

**Ähnliche Phasen:** HP-PLOT-AL2O3, Rt-Alumina, CP-AL2O3

ID/mm	FD/µm	L/m	Artikel-Nummer	EUR
0.53	25		PLT-5A-15V	405.00
0.53	50		PLT-5A-15V-50	605.00
0.53	25		PLT-5A-30V	965.00
0.53	50		PLT-5A-30V-50	1025.00
0.32	25		PLT-5A-30W	990.00
0.32	12		PLT-5A-30W-1	735.00
0.53	50		PLT-5A-50V	1610.00
0.32	25		PLT-5A-50W	1575.00
0.32	25		PLT-5A-60W	1735.00
0.53	15		PLT-AL2O3-15	415.00
0.53	15		PLT-AL2O3-30	660.00
0.32	8		PLT-AL2O3-30	705.00
0.53	15		PLT-AL2O3-50	5740.00
0.32	8		PLT-AL2O3-50	1215.00
0.53	15		PLT-AL2O3-60	1165.00
0.32	15		PLT-Q-15W	460.00
0.32	15		PLT-Q-30W	660.00
0.32	x 5		PLT-Q-50W	1470.00
0.53	20		PLT-U-30V	705.00
0.32	20		PLT-U-30W	795.00
0.32	10		PLT-Y-30W-10.	685.00

Sie erhalten auch Säulen von Agilent, CS, GS-Tek, MN, Ohio Valley, Quadrex, RESTEK, SGE, Varian

